

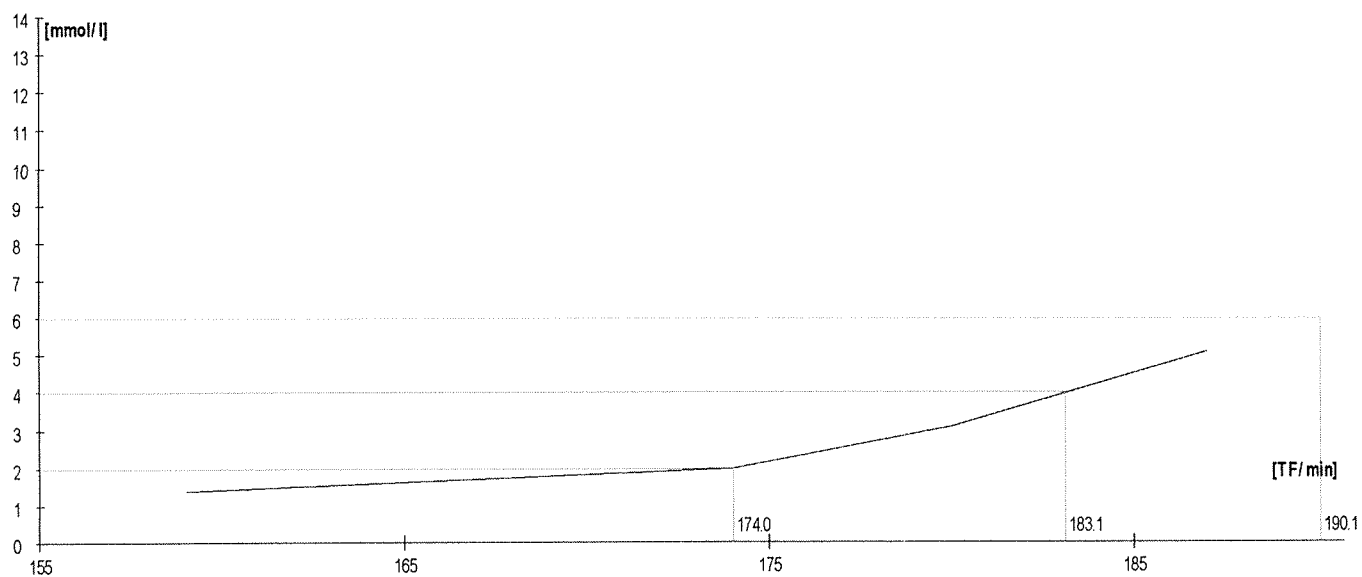
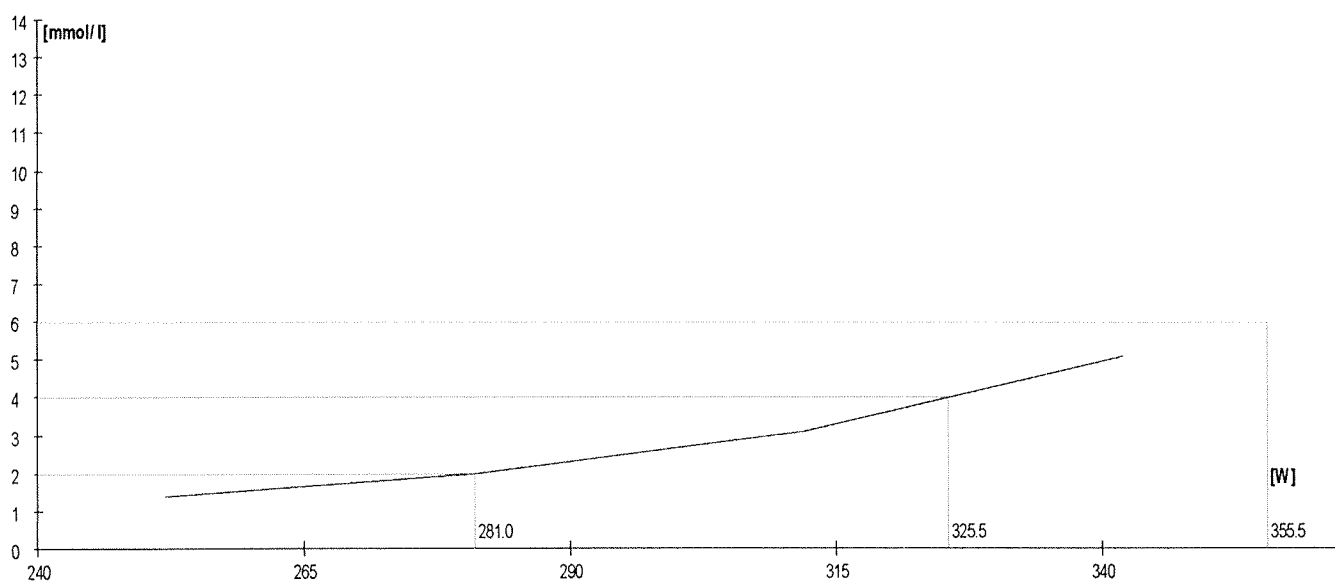
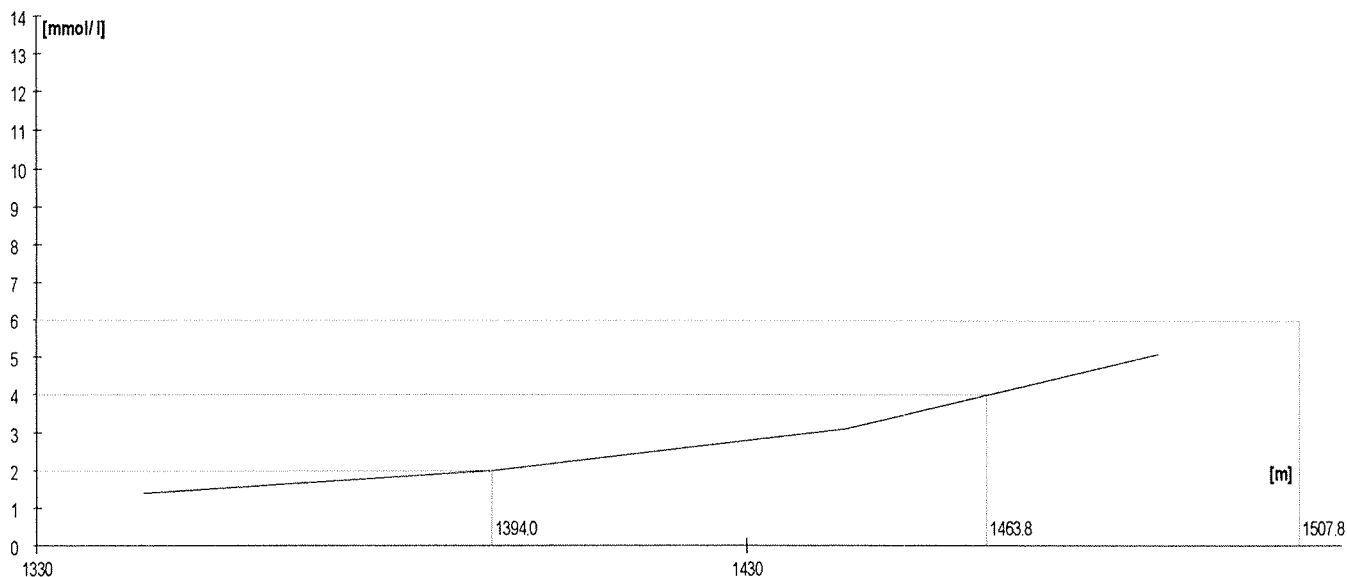
VESLOVÁNÍ PRAHY - REPREZENTACE - JUNIOŘI - OLOMOUC - 8. února 2014

JMENO	WATY	PRAHY
STRÍŽ	303,0	261,7
ŠANCA	335,0	266,6
SVÍTIL	314,0	240,3
SOLAR	311,0	276,8
NOVOTNÝ	280,0	236,1
KLUKA	342,0	311,6
SVÍZELA	311,0	269,9
GAJDUŠEK	255,0	213,4
GERHÁT	301,0	273,6
NEBL	262,0	221,2
PIVKO	304,0	270,7
ZAPLETAL	272,0	260,3
BARTOŠ	306,0	282,4
RAMPULA	282,0	296*)
REŽŇÁK	312,0	278,1
HELEŠIC	342,0	325,5
SOLAROVÁ	200,0	173,3
VAREKOVÁ	279,0	234,3
NEČASOVÁ	202,0	183,0
NOVOTNÍKOVÁ	241,0	223,7
ULEHLOVÁ	203,0	173,5
JUZIKOVÁ	197,0	164,2
HLAVINKOVÁ	200,0	169,5

*) vypočítaná hodnota

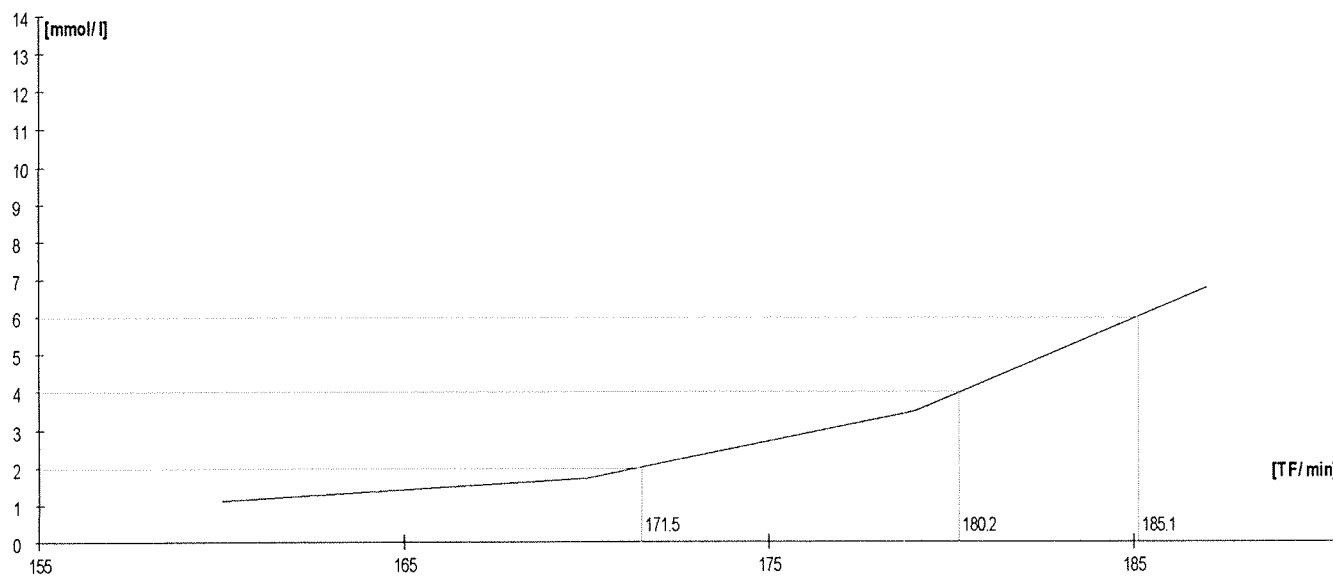
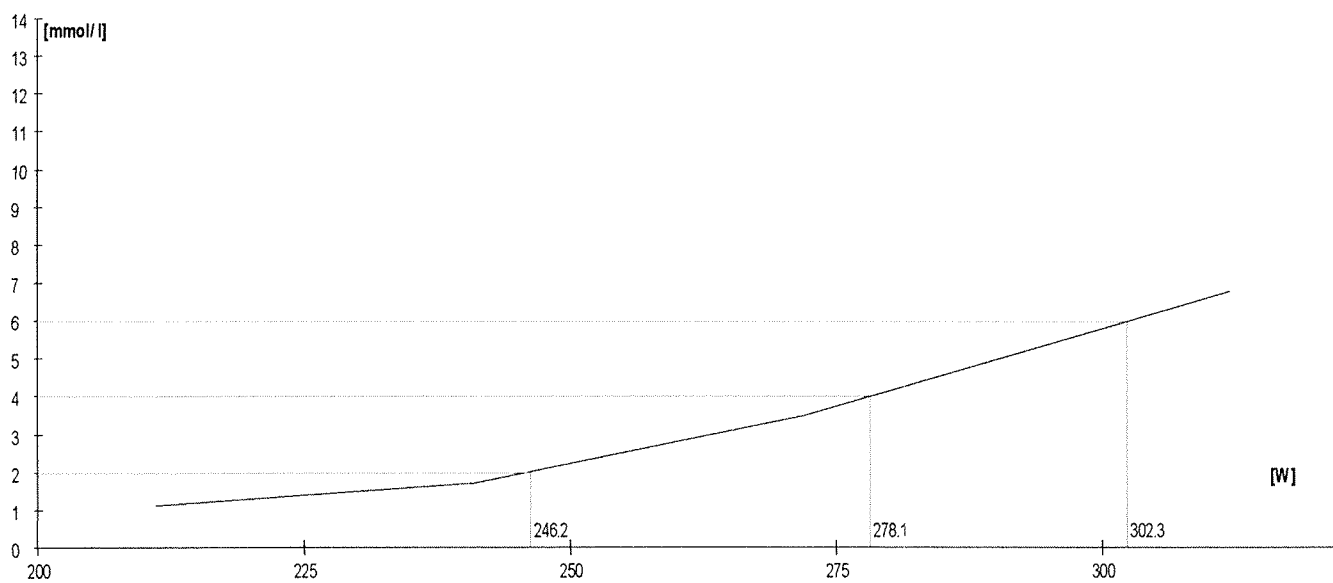
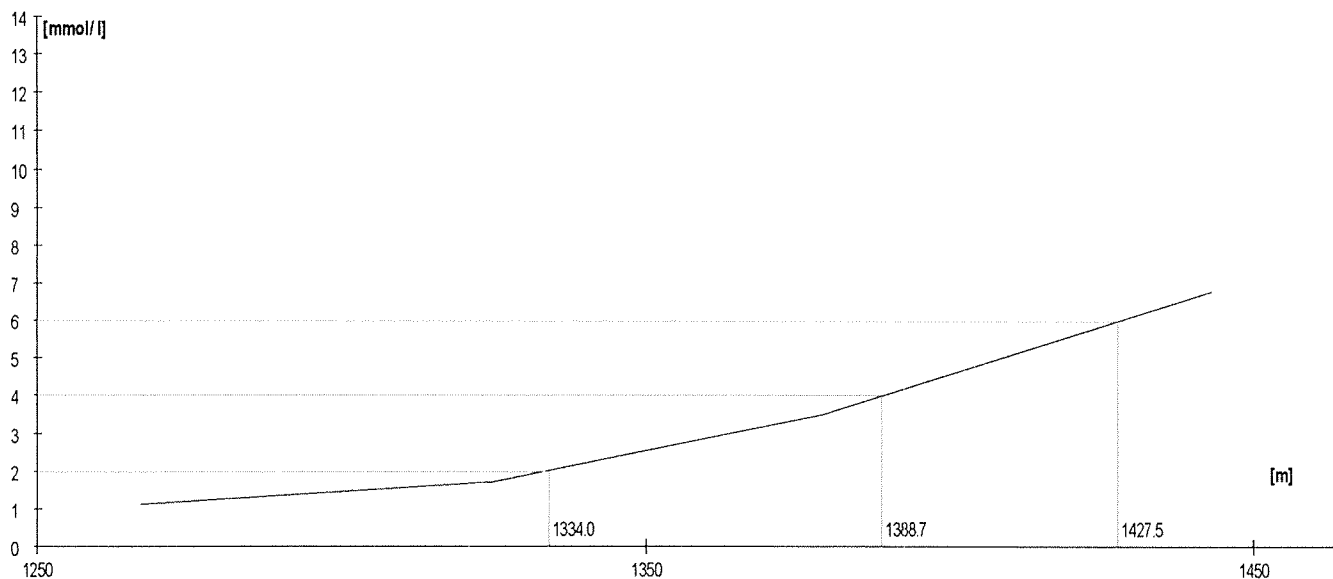
	Rozm. [W]	Výkon [m]	W	TF/min	Lakt.
1.	250	1345	252	159	1,4
2.	280	1394	281	174	2,0
3.	310	1444	312	180	3,1
4.	340	1488	342	187	5,1

Lakt.	TF/min	W
2.0	174.0	281.0
3.0		
4.0	183.1	325.6
5.0		
6.0	190.1	355.5
7.0		
8.0		



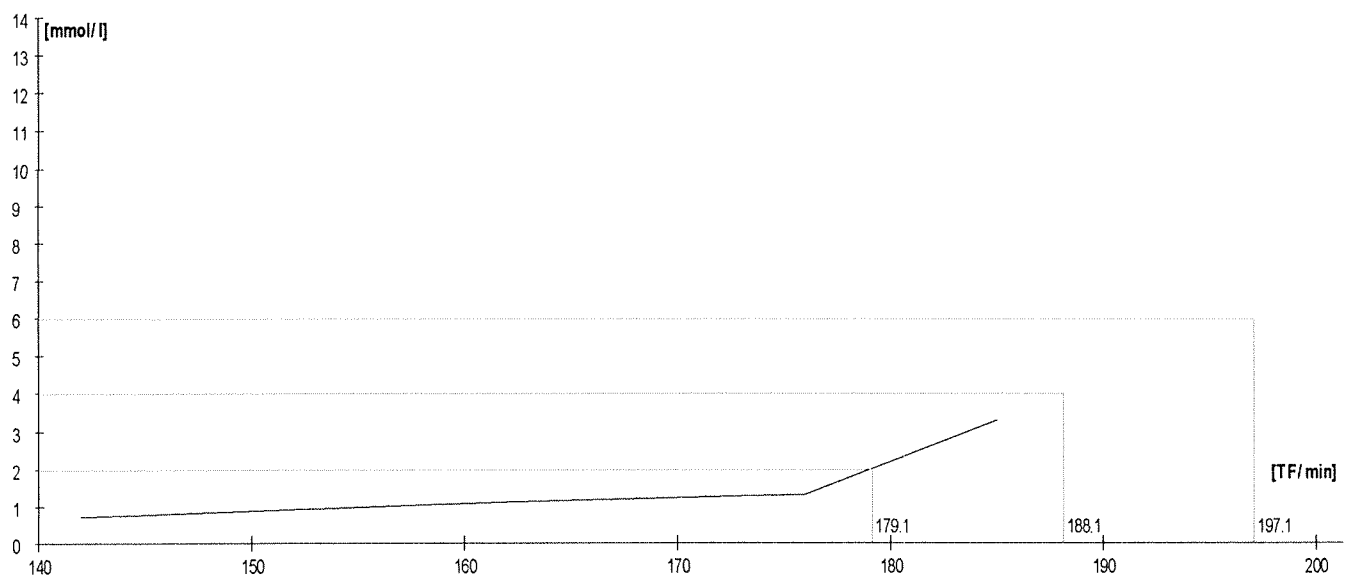
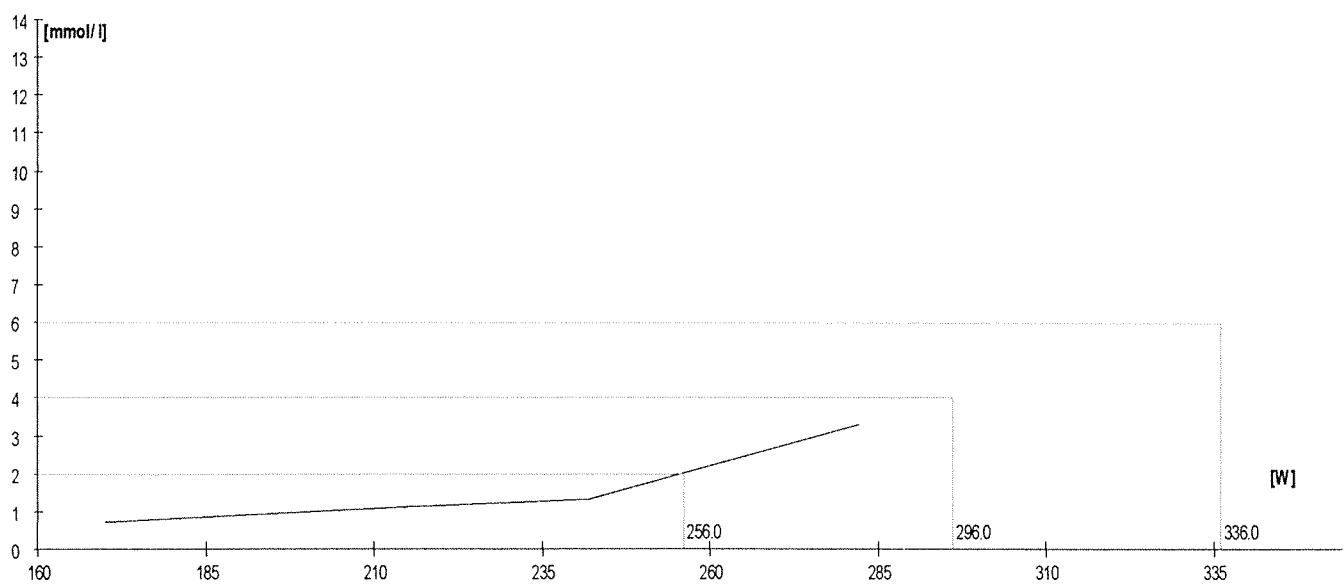
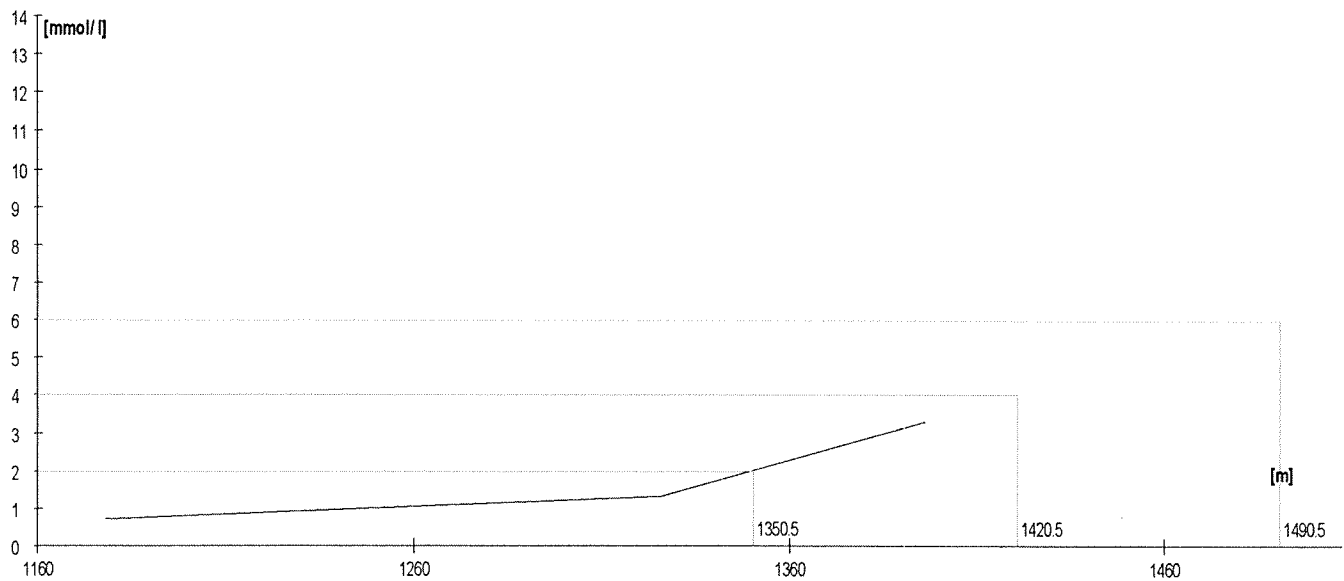
	Rozm. [W]	Výkon [m]	W	TF/min	Lakt.
1.	210	1267	211	160	1,1
2.	240	1325	241	170	1,7
3.	270	1379	272	179	3,5
4.	300	1443	312	187	6,8

Lakt.	TF/min	W
2.0	171.5	246.2
3.0		
4.0	180.2	278.1
5.0		
6.0	185.1	302.3
7.0		
8.0		



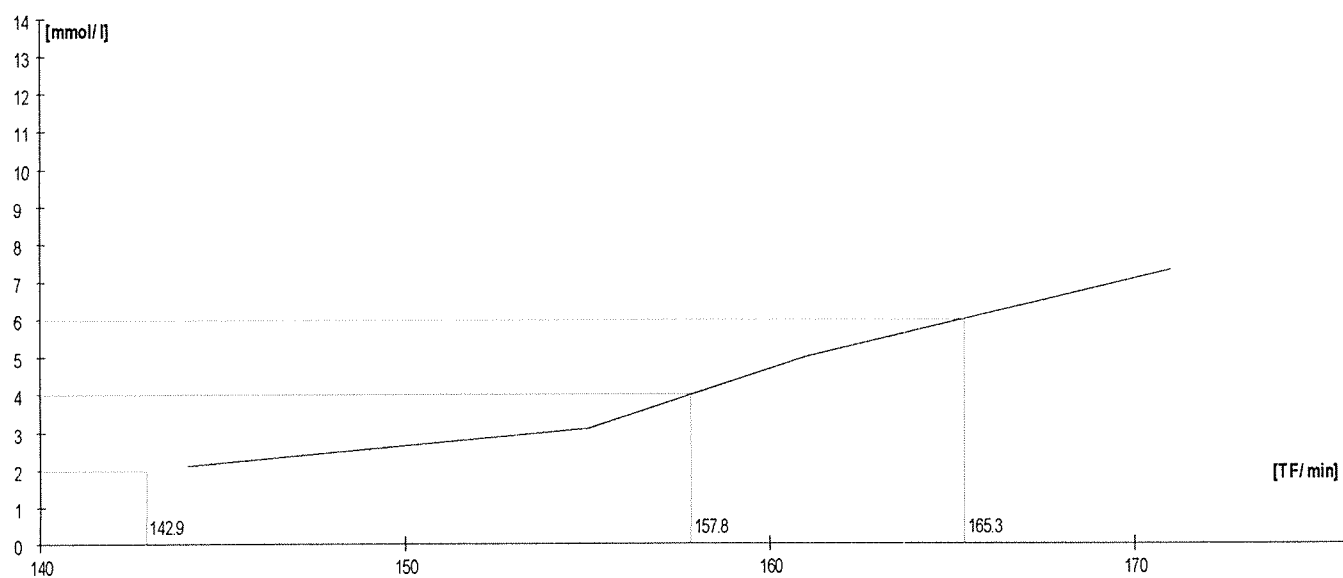
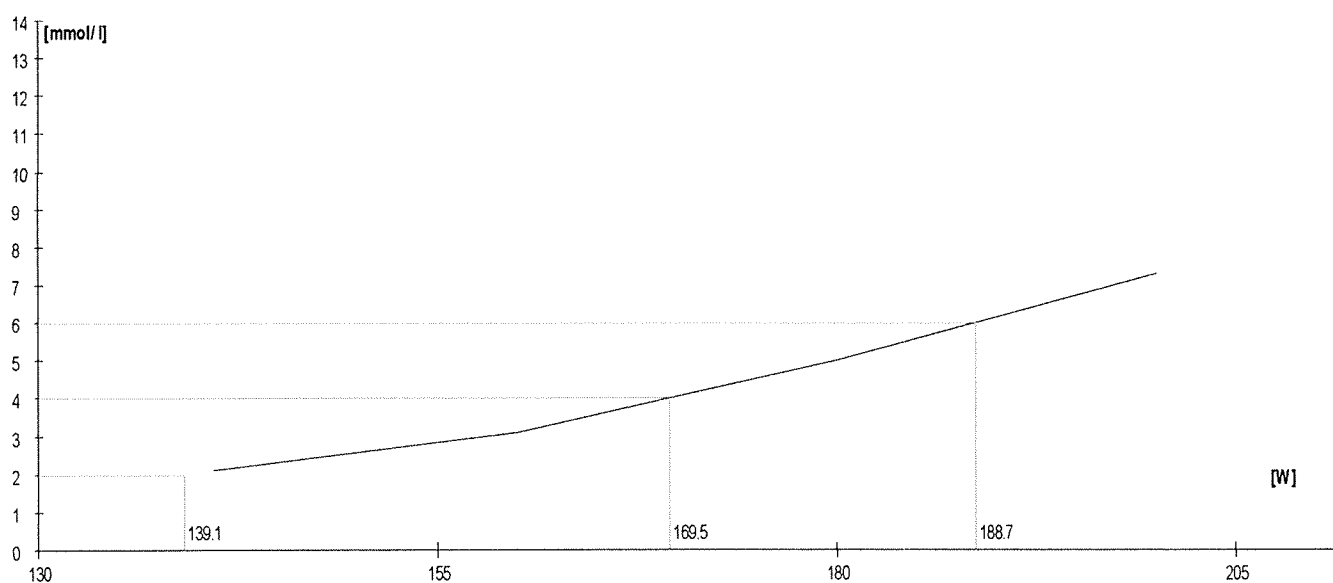
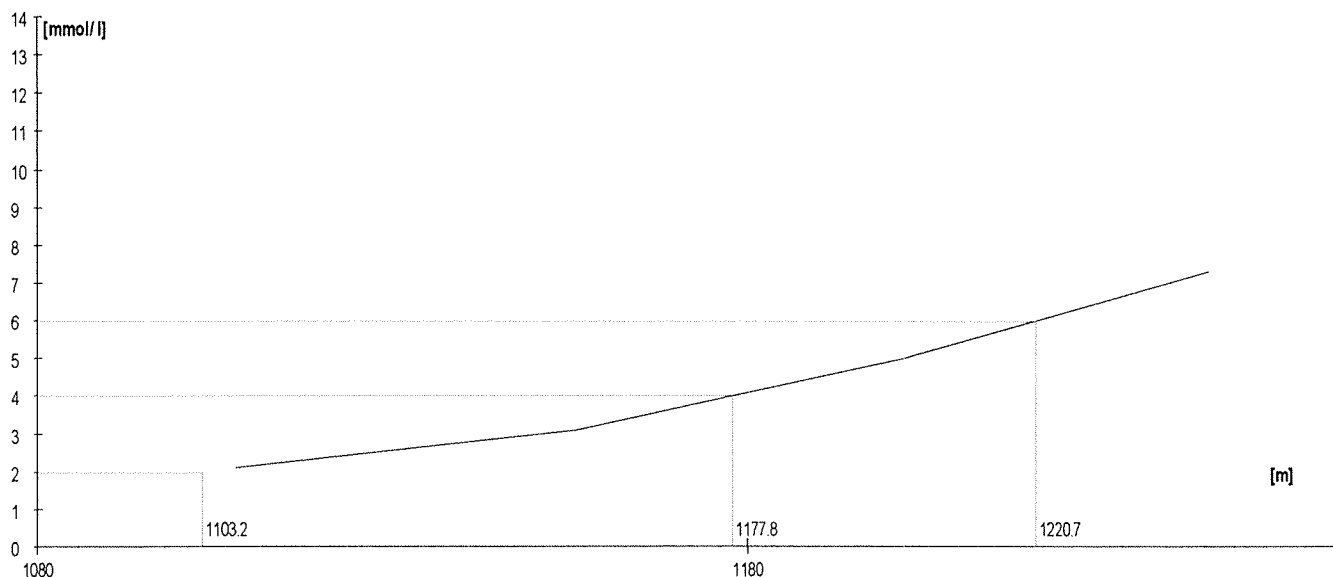
	Rozm. [W]	Výkon [m]	W	TF/min	Lakt.
1.	160	1178	170	142	0,7
2.	210	1276	215	162	1,1
3.	240	1326	242	176	1,3
4.	280	1396	282	185	3,3

Lakt.	TF/min	W
2.0	179.1	256.0
3.0		
4.0	188.1	296.0
5.0		
6.0	197.1	336.0
7.0		
8.0		



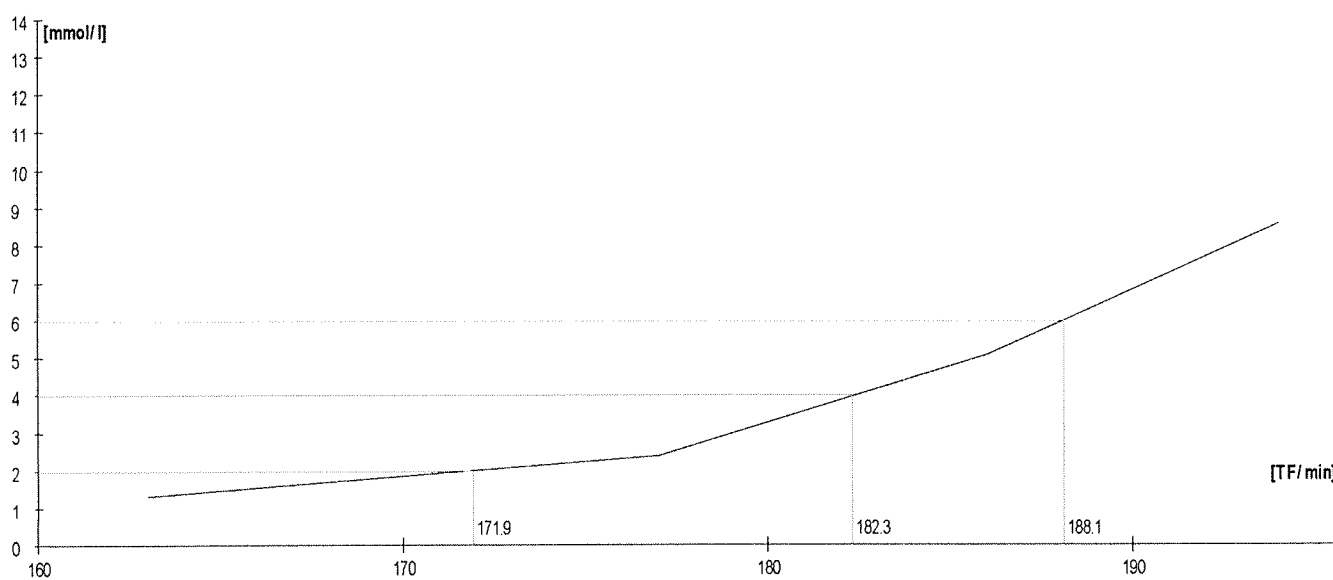
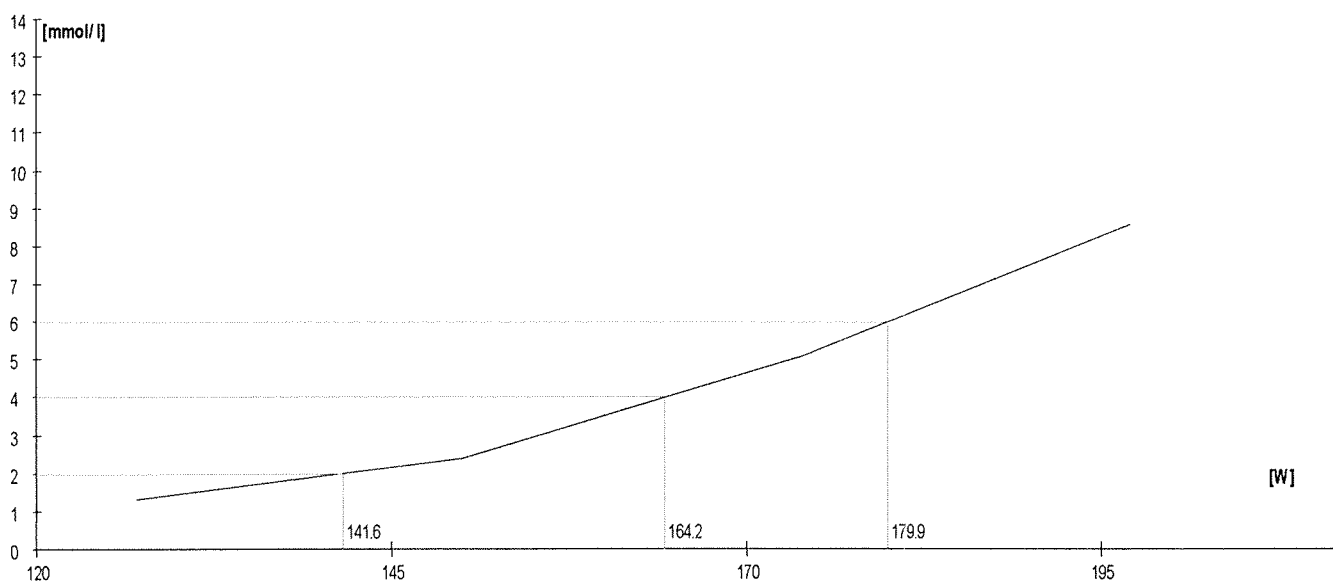
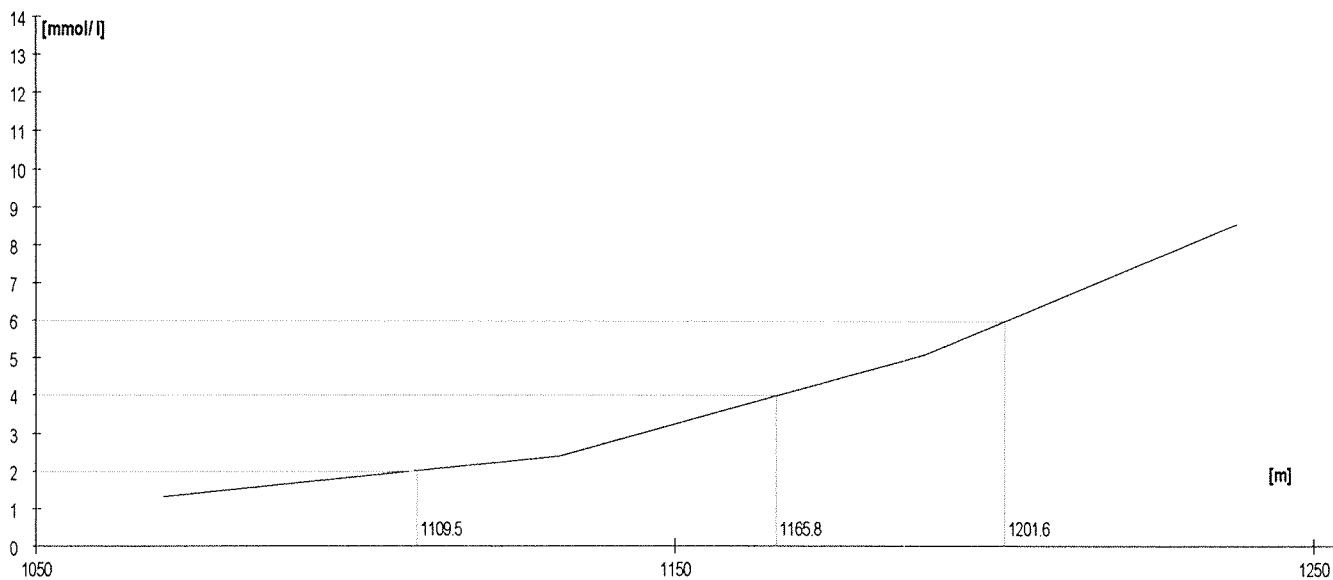
	Rozm. [W]	Výkon [m]	W	TF/min	Lakt.
1.	140	1108	141	144	2,1
2.	160	1156	160	155	3,1
3.	180	1202	180	161	5,0
4.	200	1245	200	171	7,3

Lakt.	TF/min	W
2.0	142.9	139.1
3.0		
4.0	157.8	169.5
5.0		
6.0	165.3	188.7
7.0		
8.0		



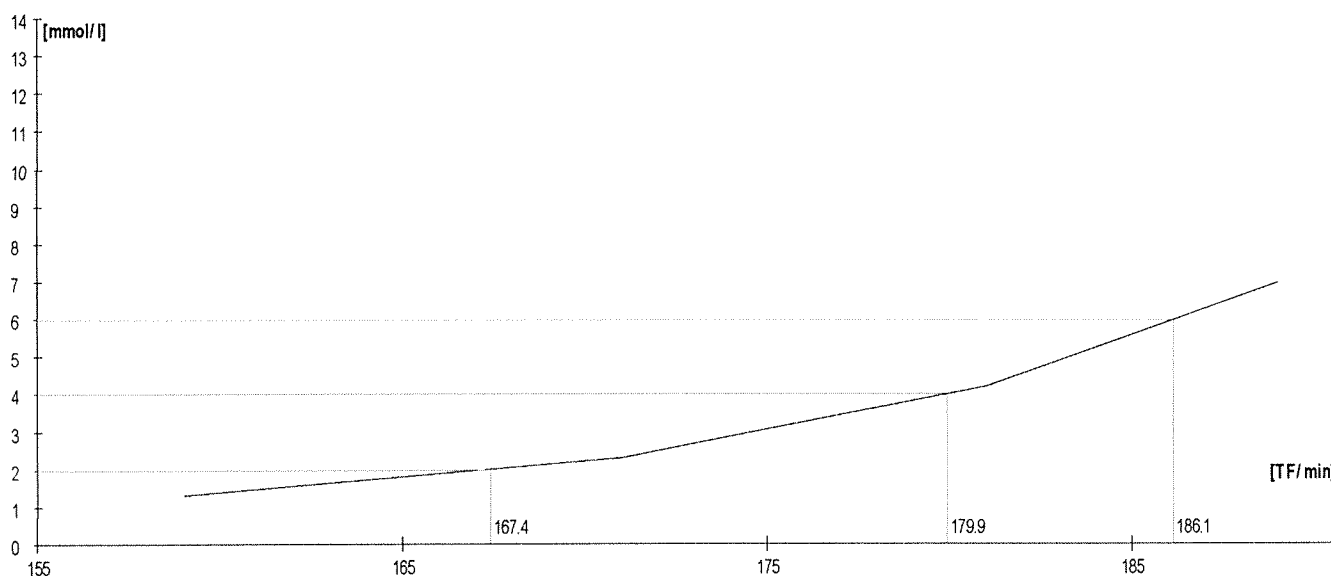
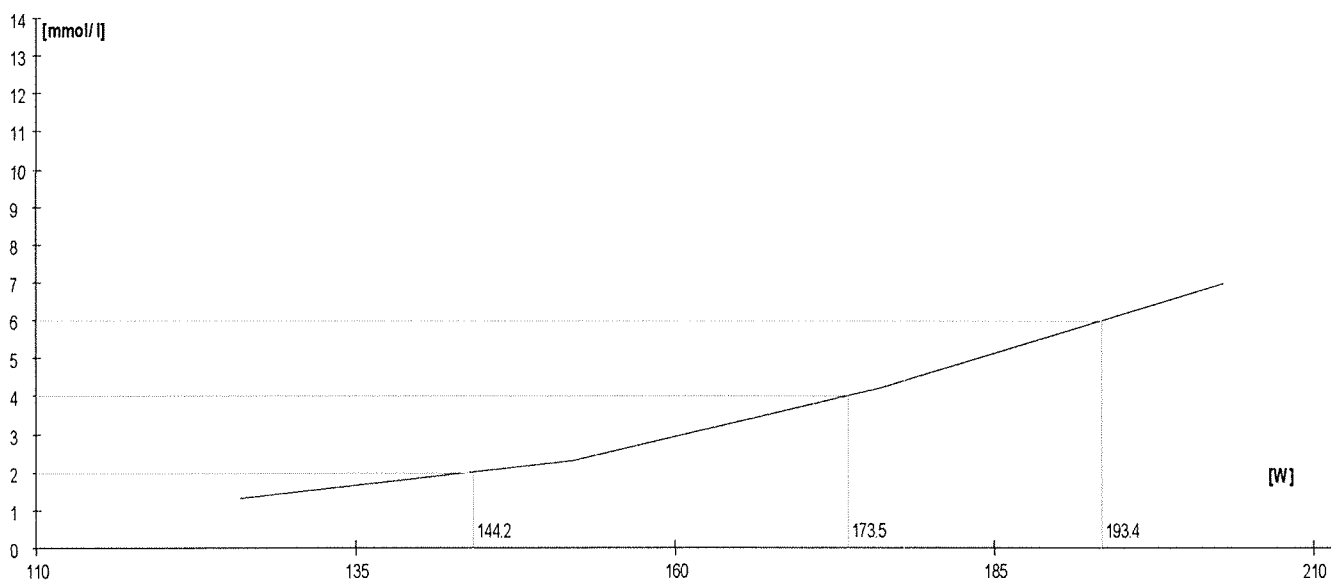
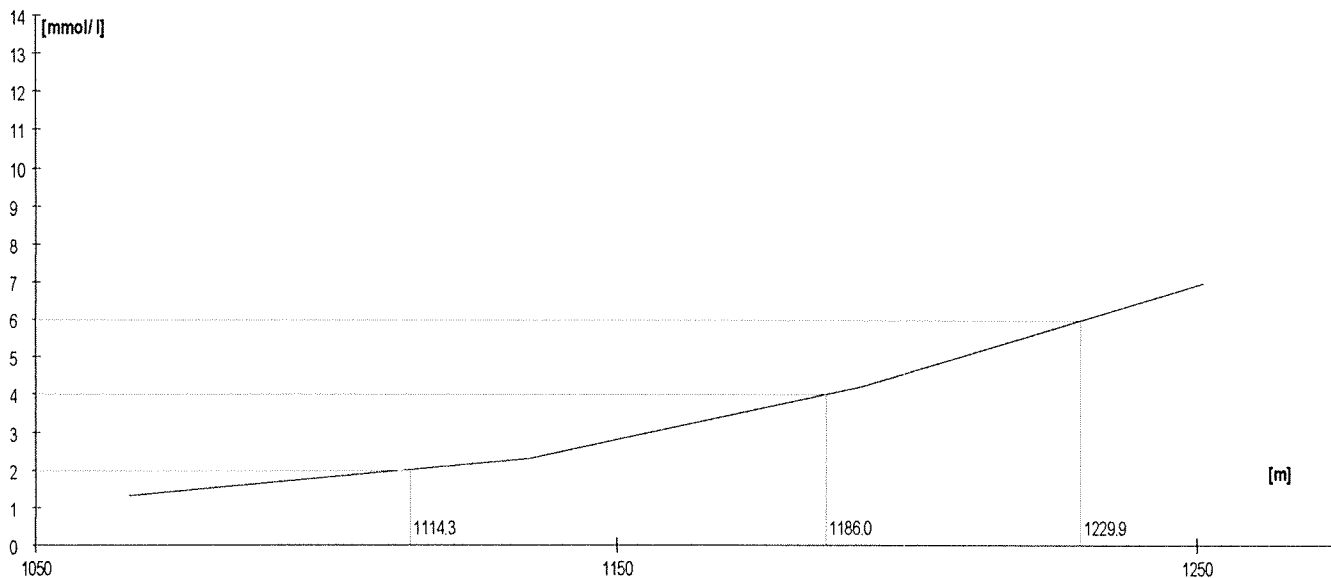
	Rozm. [W]	Výkon [m]	W	TF/min	Lakt.
1.	125	1070	127	163	1,3
2.	150	1132	150	177	2,4
3.	175	1189	174	186	5,1
4.	200	1238	197	194	8,6

Lakt.	TF/min	W
2.0	171.9	141.6
3.0		
4.0	182.3	164.2
5.0		
6.0	188.1	179.9
7.0		
8.0		



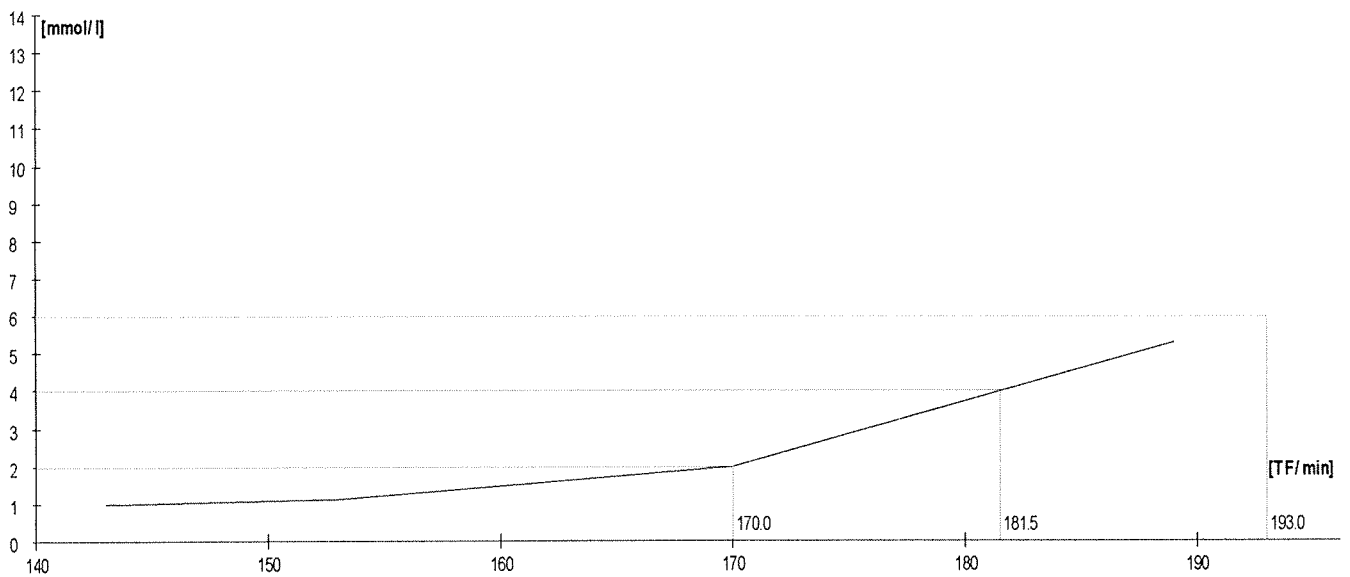
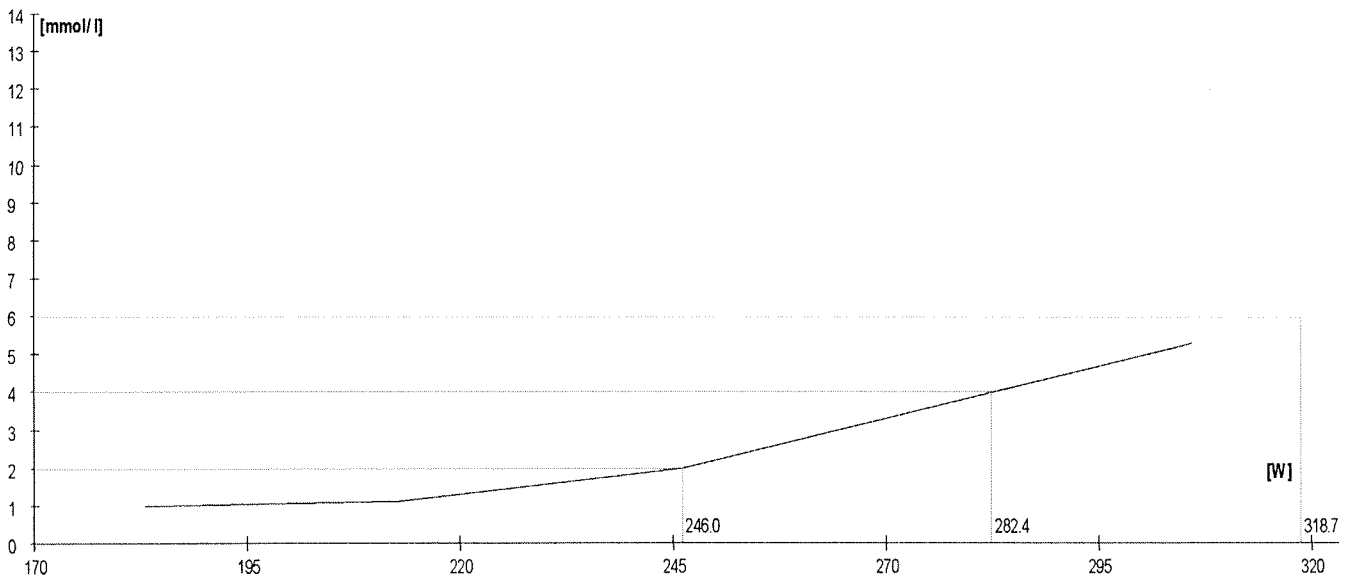
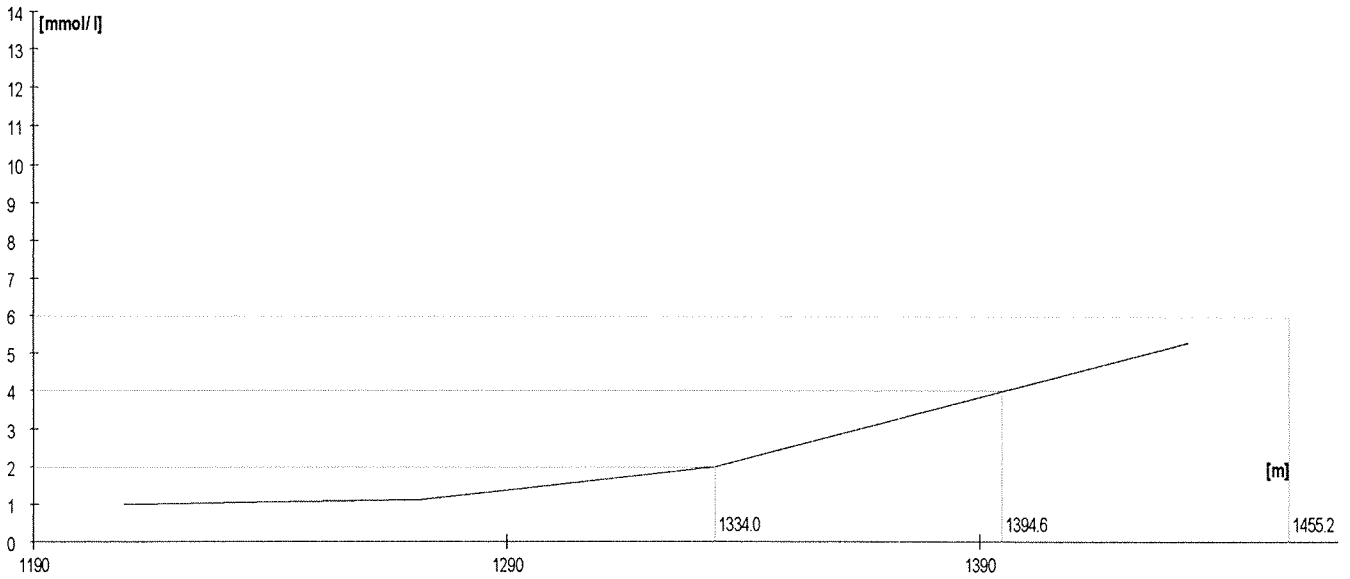
	Rozm. [W]	Výkon [m]	W	TF/min	Lakt.
1.	125	1066	126	159	1,3
2.	150	1135	152	171	2,3
3.	175	1192	176	181	4,2
4.	200	1251	203	189	7,0

Lakt.	TF/min	W
2.0	167.4	144.2
3.0		
4.0	179.9	173.5
5.0		
6.0	186.1	193.4
7.0		
8.0		



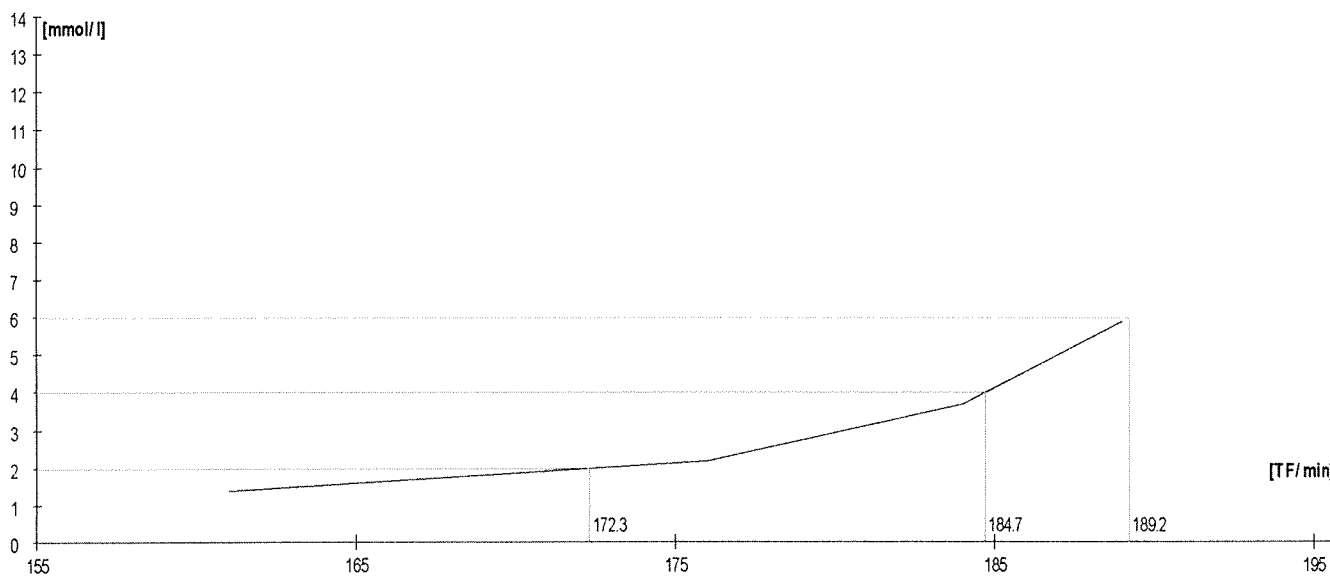
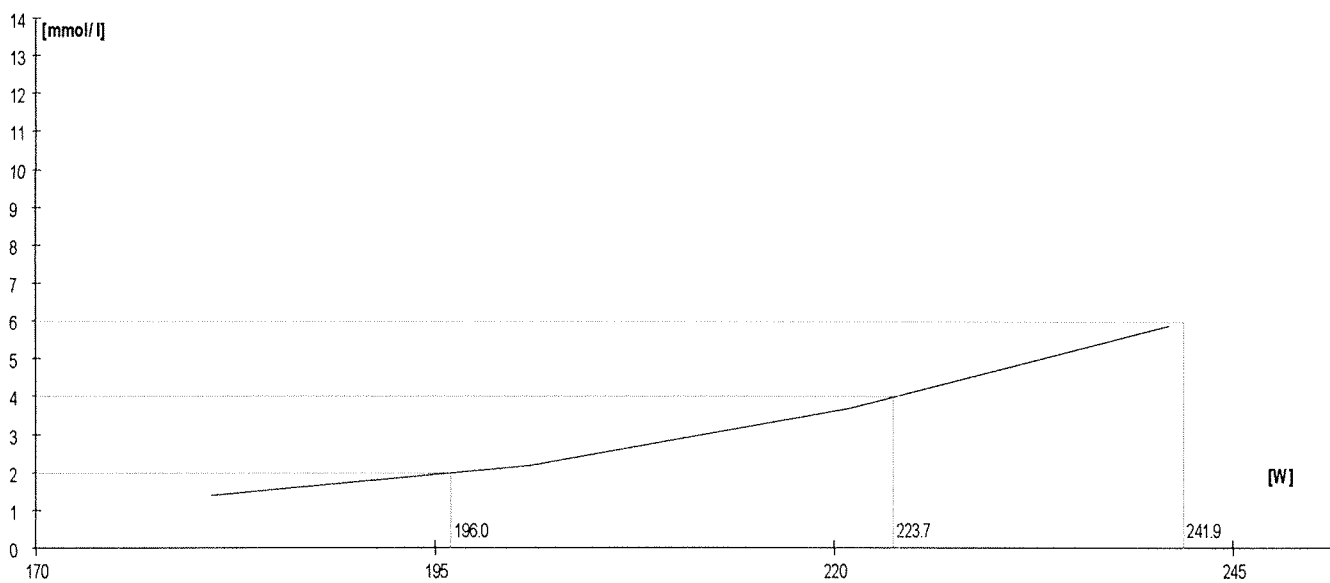
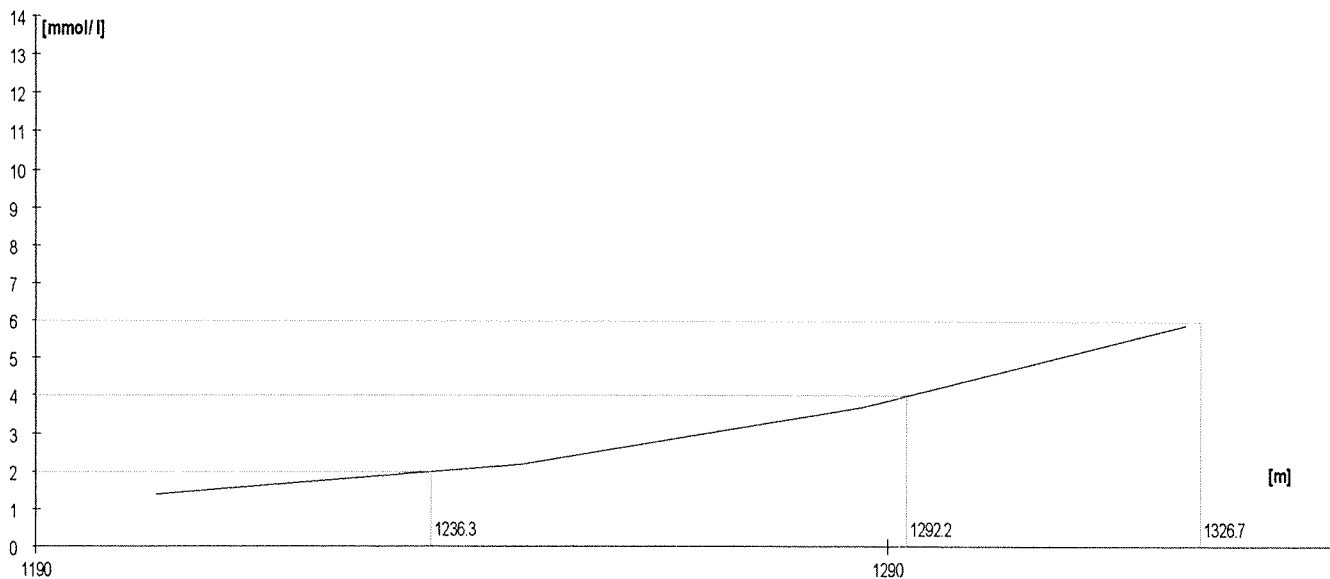
	Rozm. [W]	Výkon [m]	W	TF/min	Lakt.
1.	180	1209	183	143	1,0
2.	210	1272	213	153	1,1
3.	240	1334	246	170	2,0
4.	270	1434	306	189	5,3

Lakt.	TF/min	W
2.0	170.0	246.0
3.0		
4.0	181.5	282.4
5.0		
6.0	193.0	318.7
7.0		
8.0		



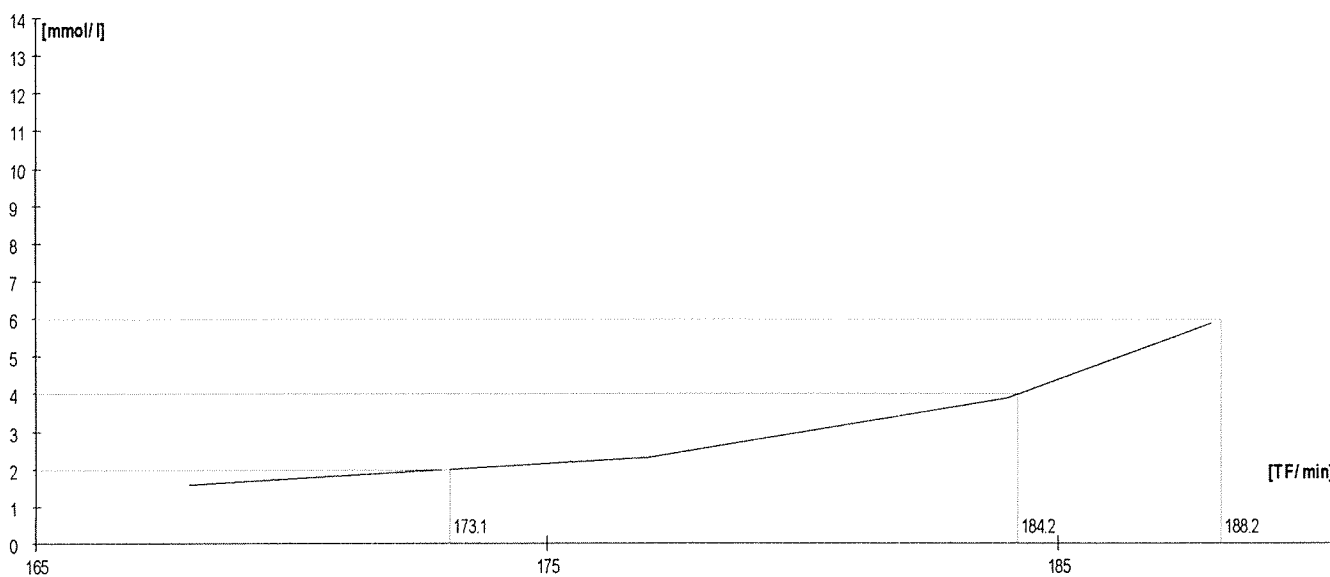
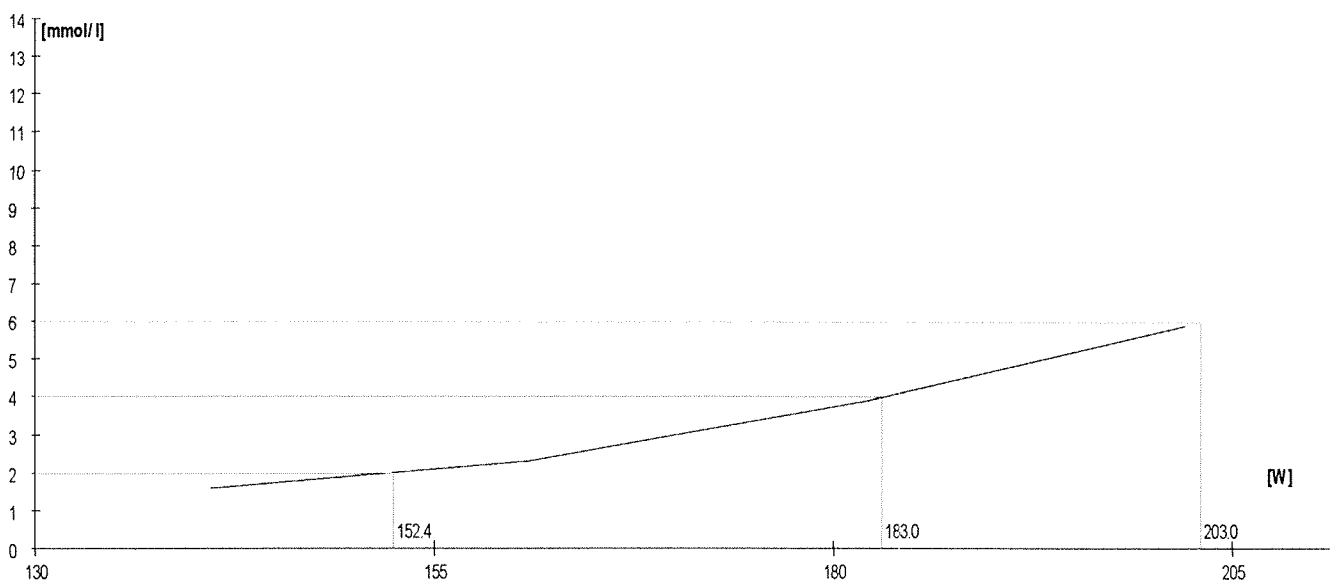
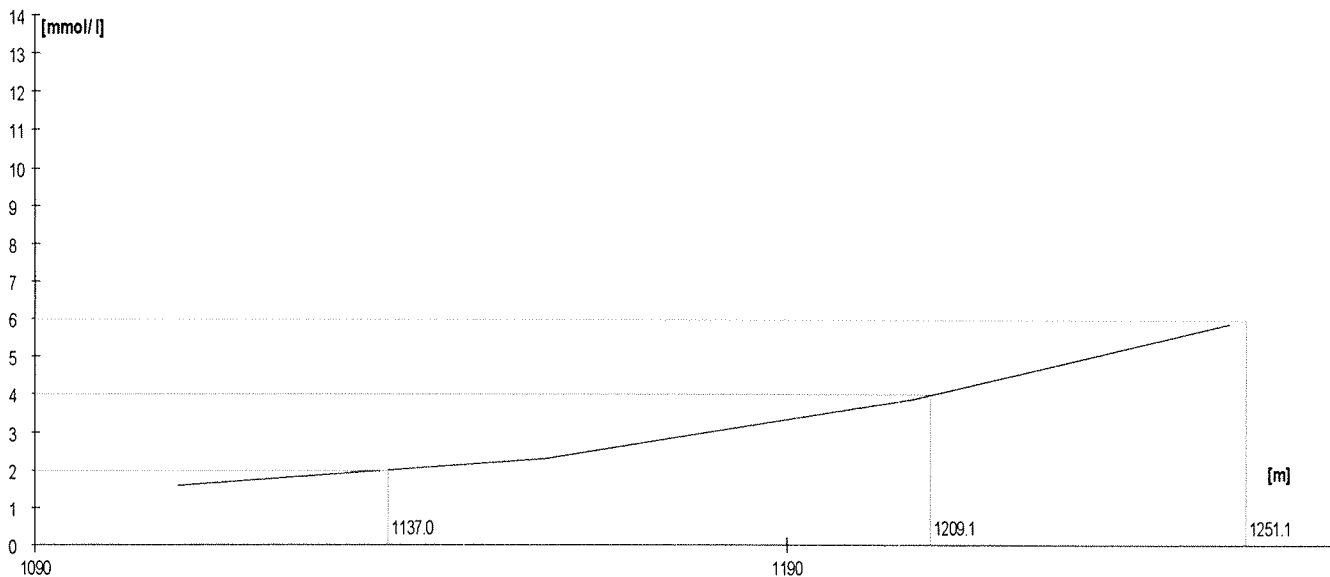
	Rozm. [W]	Výkon [m]	W	TF/min	Lakt.
1.	180	1204	181	161	1,4
2.	200	1247	201	176	2,2
3.	220	1287	221	184	3,7
4.	240	1325	241	189	5,9

Lakt.	TF/min	W
2.0	172.3	196.0
3.0		
4.0	184.7	223.7
5.0		
6.0	189.2	241.9
7.0		
8.0		



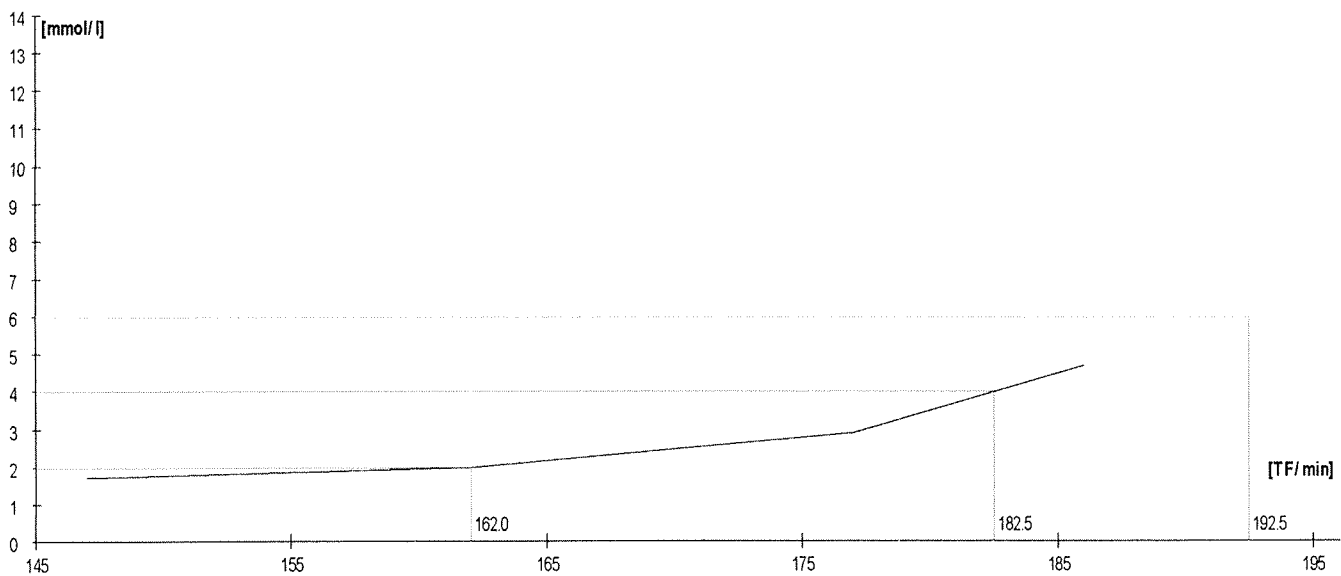
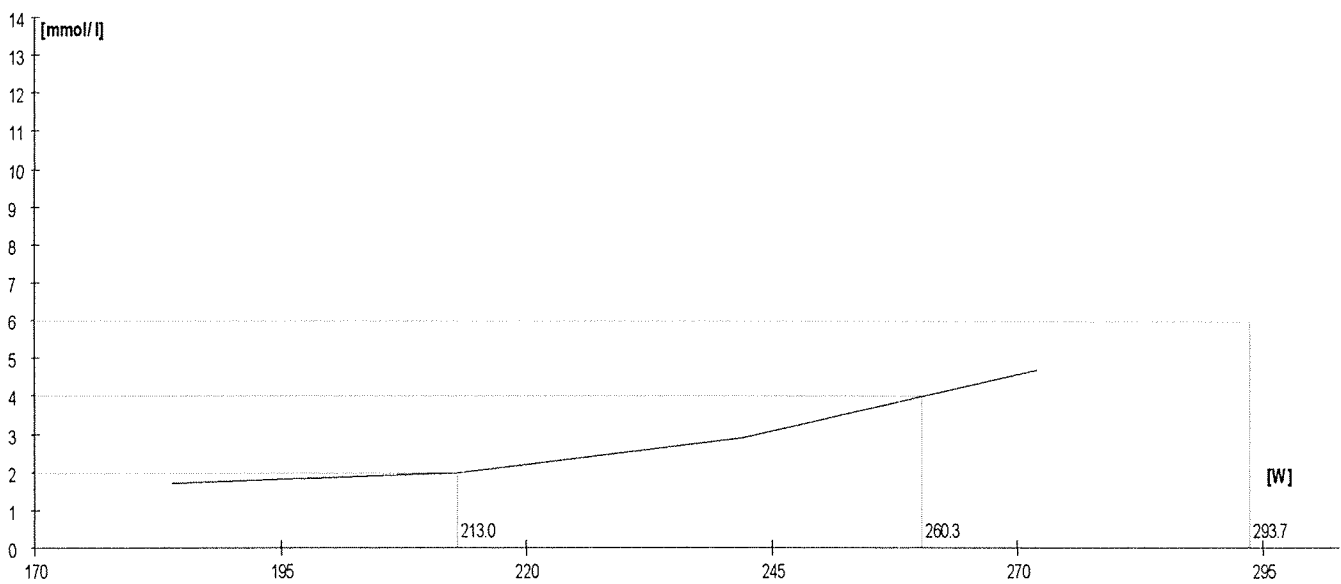
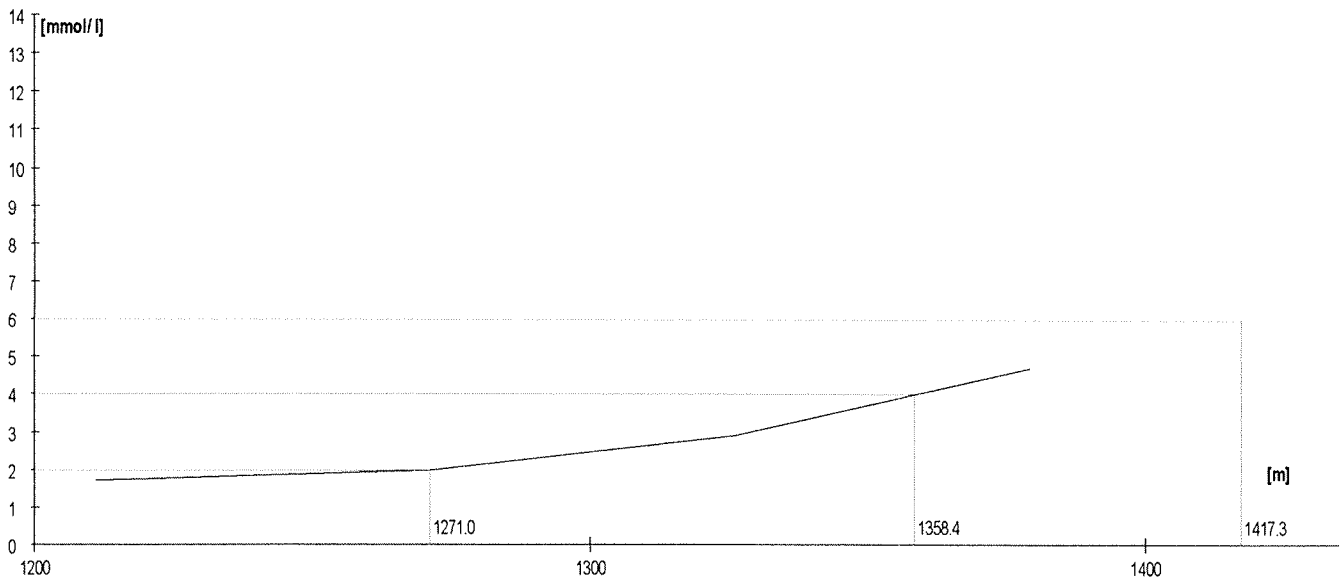
	Rozm. [W]	Výkon [m]	W	TF/min	Lakt.
1.	140	1109	141	168	1,6
2.	160	1158	161	177	2,3
3.	180	1207	182	184	3,9
4.	200	1249	202	188	5,9

Lakt.	TF/min	W
2.0	173.1	152.4
3.0		
4.0	184.2	183.0
5.0		
6.0	188.2	203.0
7.0		
8.0		



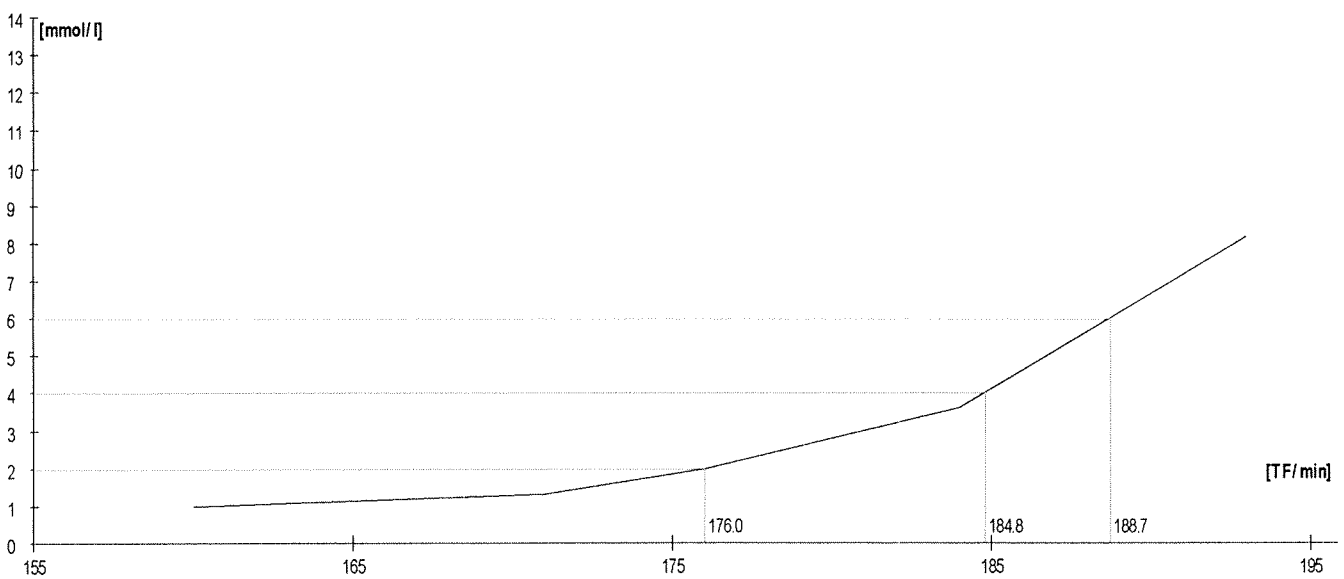
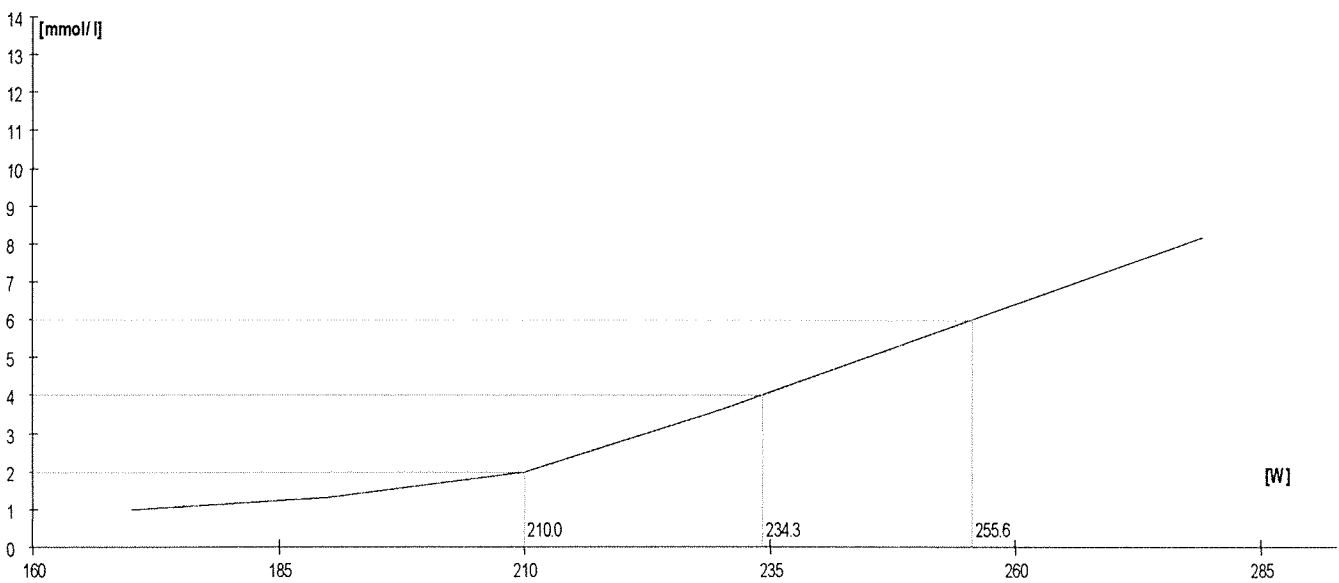
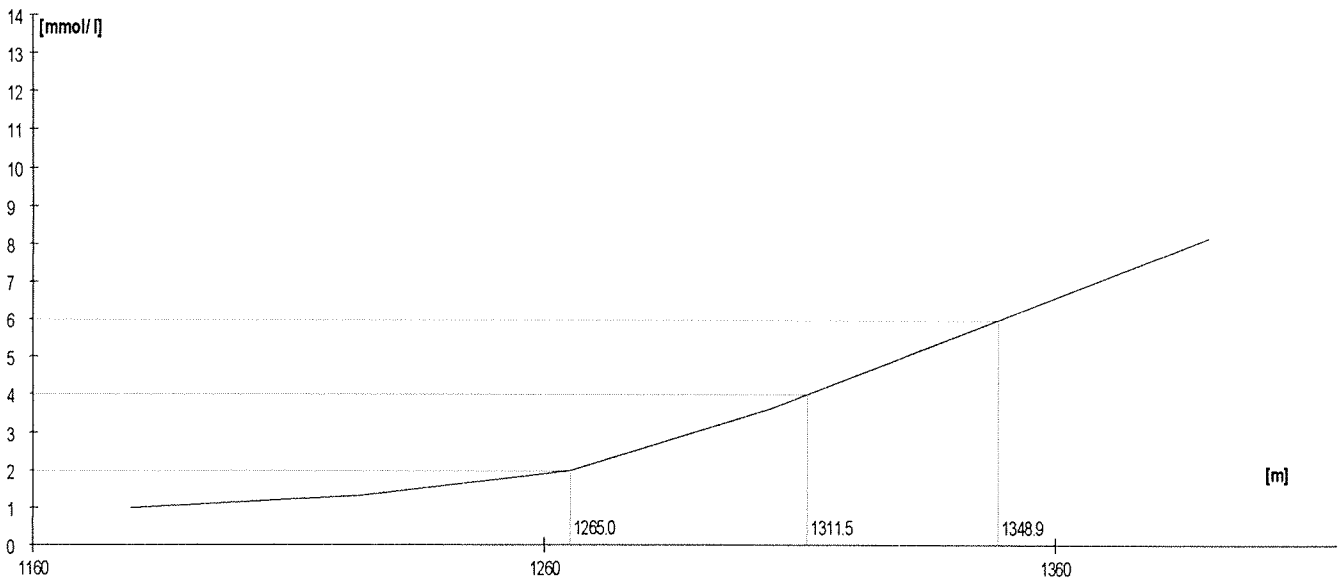
	Rozm. [W]	Výkon [m]	W	TF/min	Lakt.
1.	180	1211	184	147	1,7
2.	210	1271	213	162	2,0
3.	240	1326	242	177	2,9
4.	270	1379	272	186	4,7

Lakt.	TF/min	W
2.0	162.0	213.0
3.0		
4.0	182.5	260.3
5.0		
6.0	192.5	293.7
7.0		
8.0		



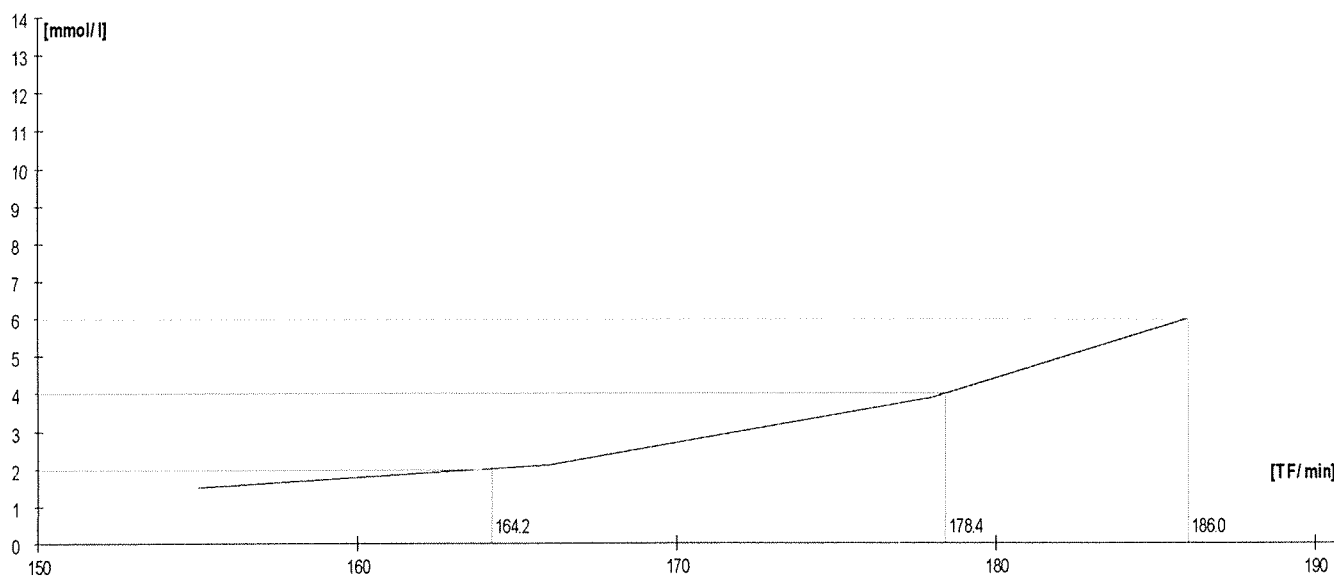
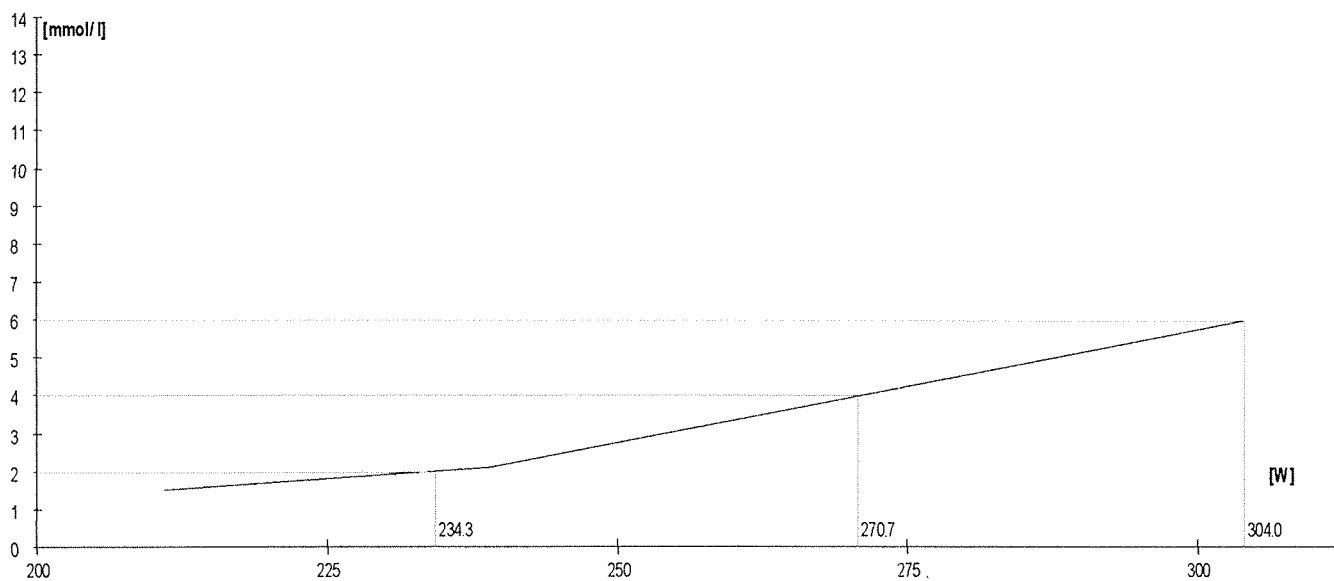
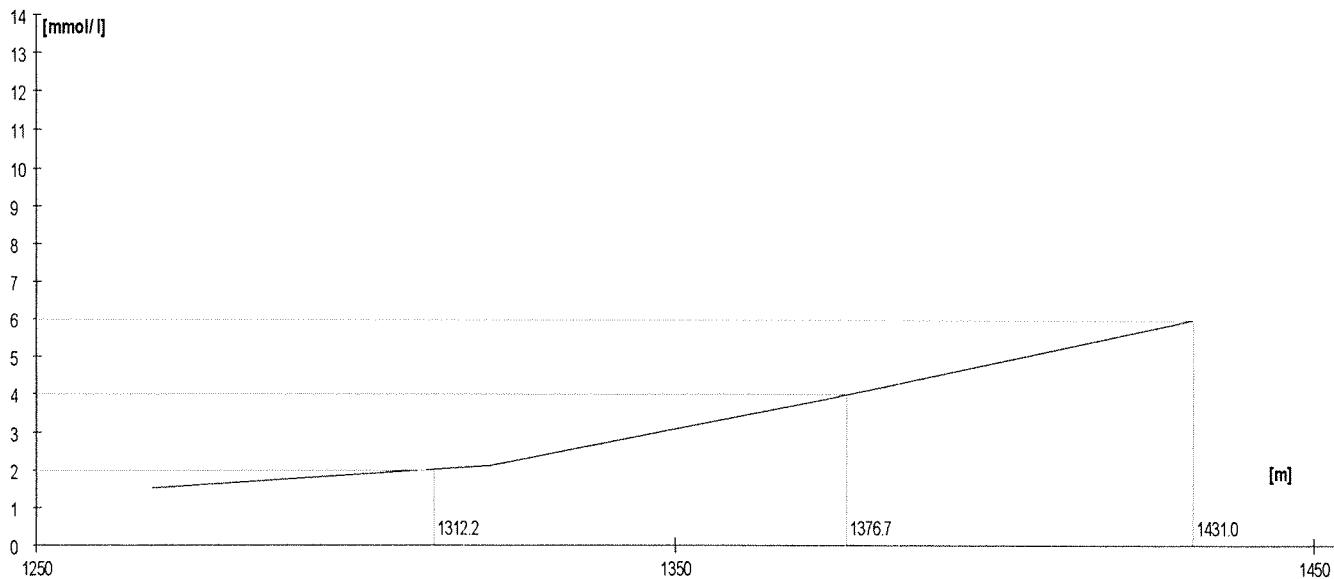
	Rozm. [W]	Výkon [m]	W	TF/min	Lakt.
1.	170	1179	170	160	1,0
2.	190	1224	190	171	1,3
3.	210	1265	210	176	2,0
4.	230	1304	230	184	3,6
5.	250	1390	279	193	8,2

Lakt.	TF/min	W
2.0	176.0	210.0
3.0		
4.0	184.8	234.3
5.0		
6.0	188.7	255.6
7.0		
8.0		



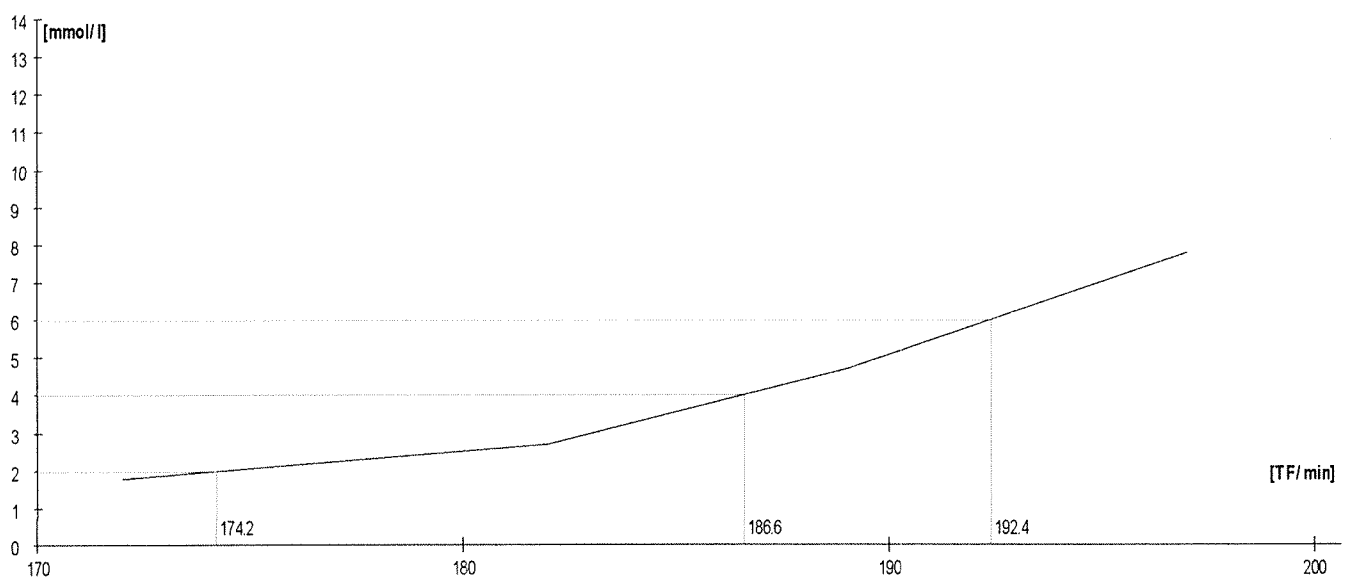
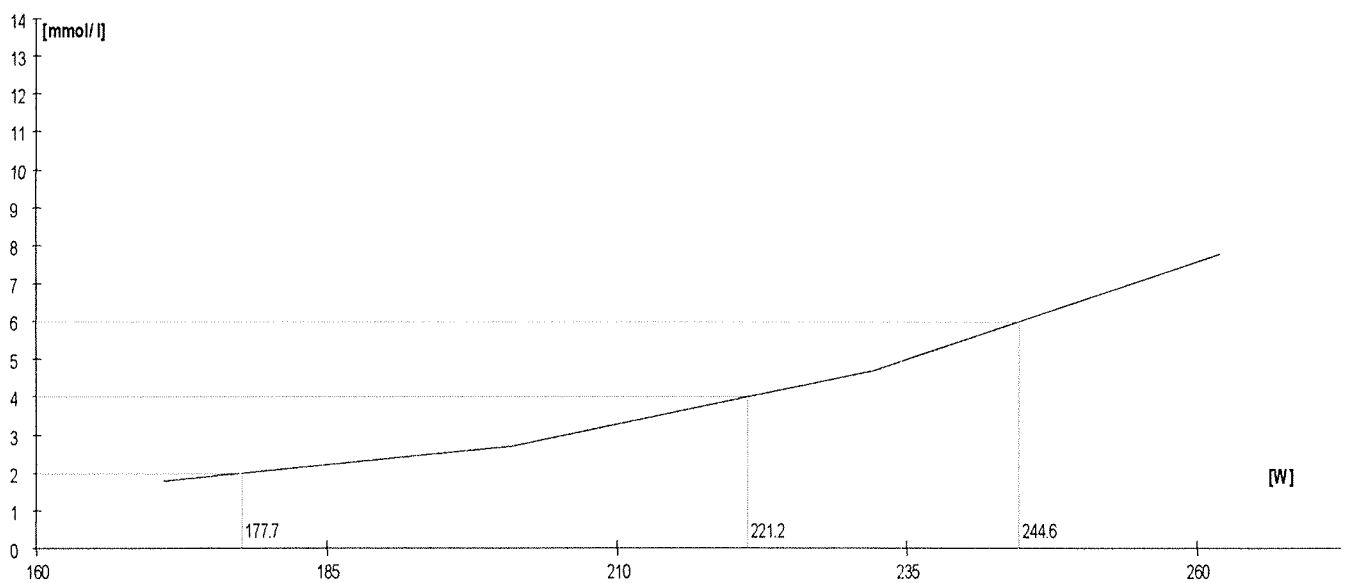
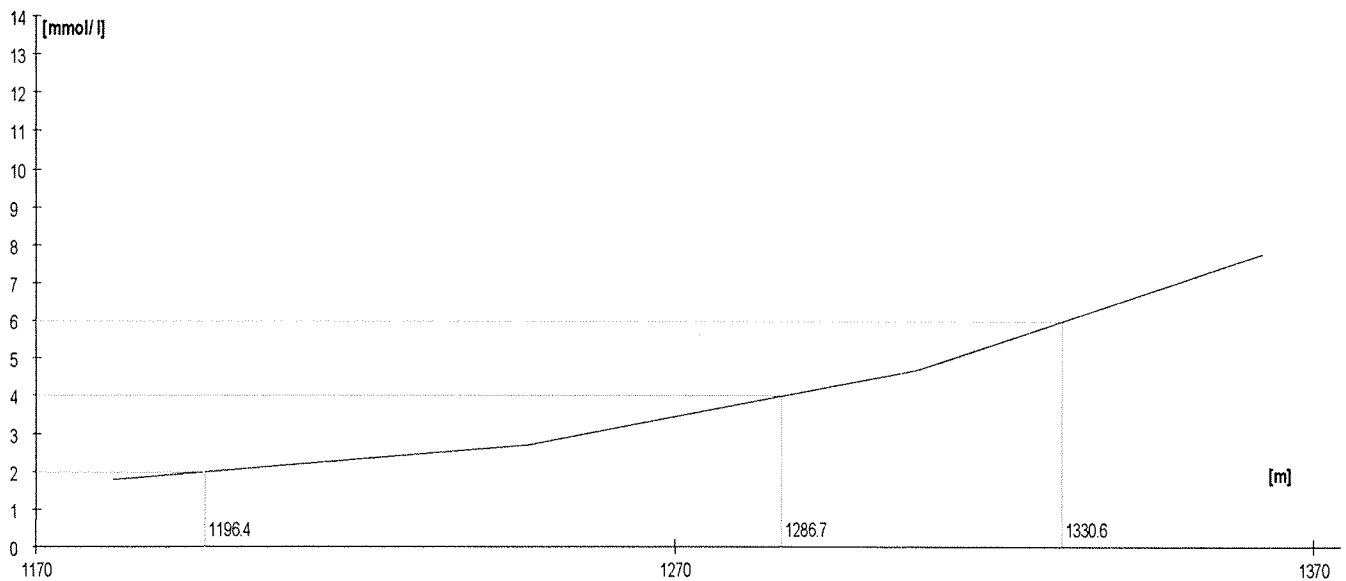
	Rozm.[W]	Výkon [m]	W	TF/min	Lakt.
1.	210	1268	211	155	1,5
2.	240	1321	239	166	2,1
3.	270	1374	269	178	3,9
4.	300	1431	304	186	6,0

Lakt.	TF/min	W
2.0	164.2	234.3
3.0		
4.0	178.4	270.7
5.0		
6.0	186.0	304.0
7.0		
8.0		



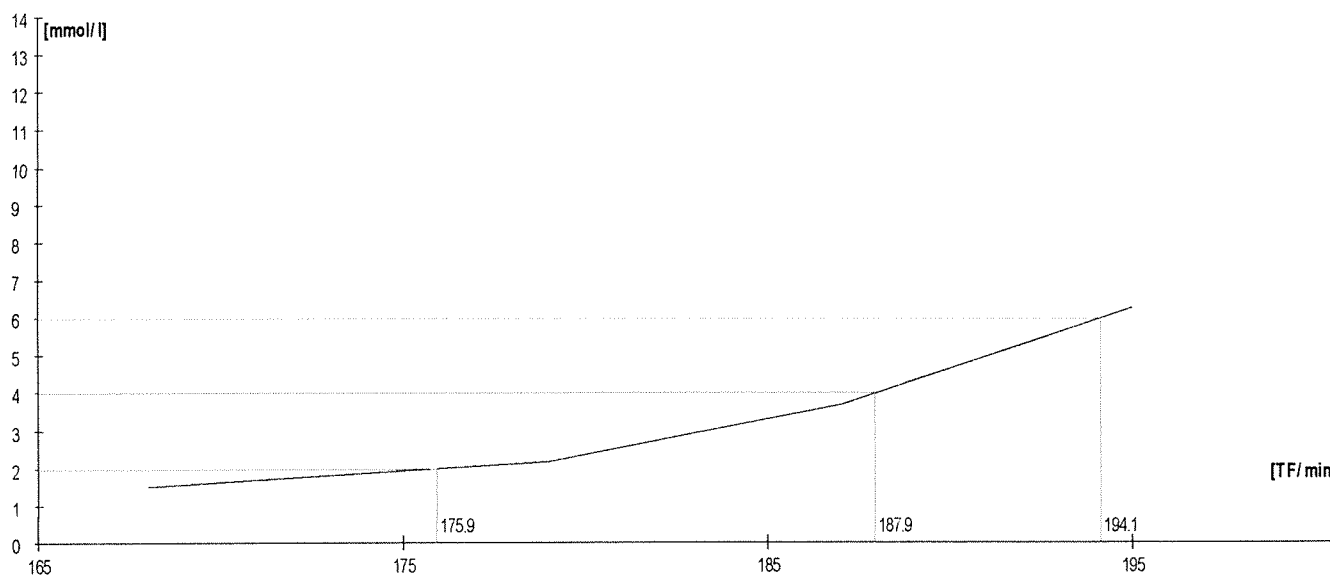
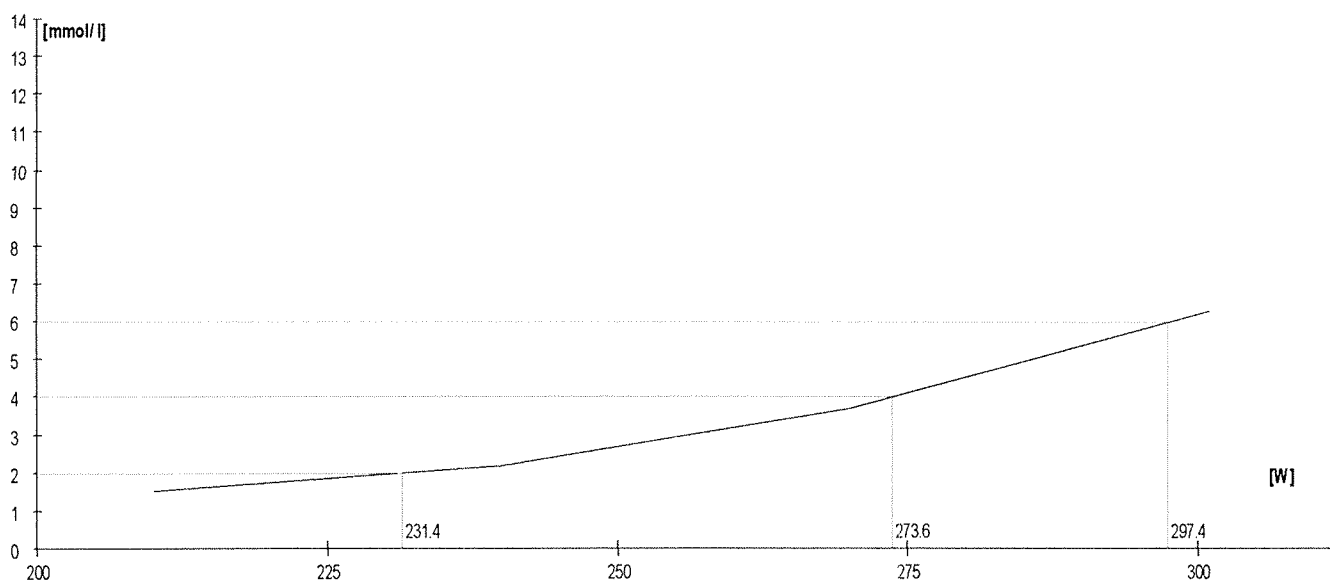
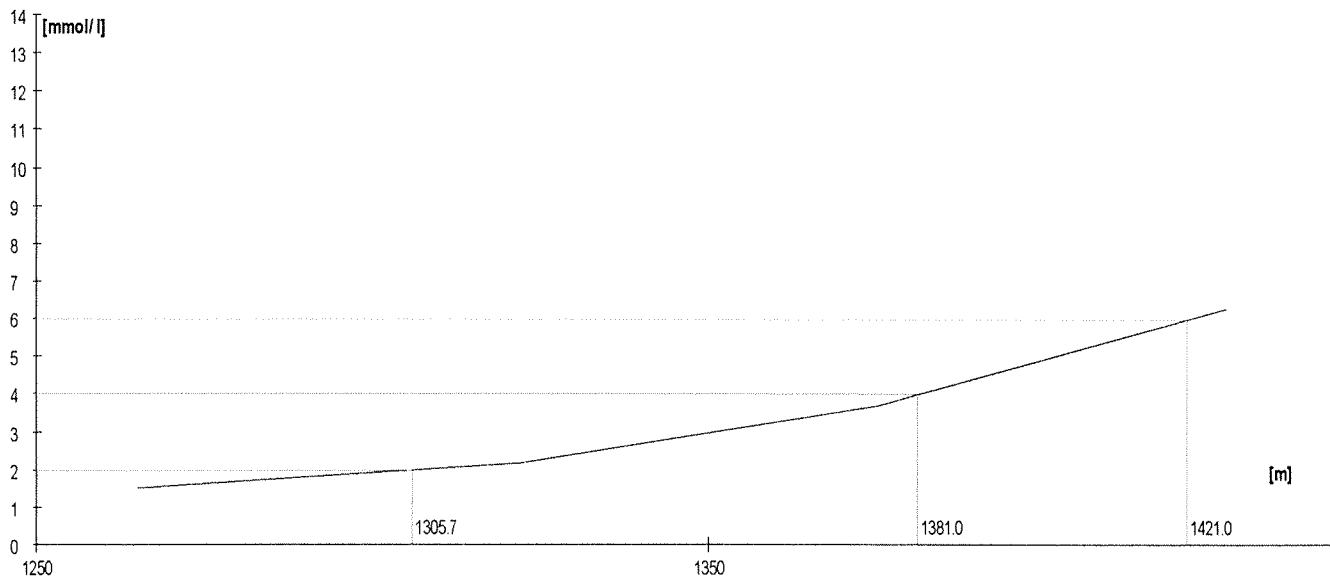
	Rozm. [W]	Výkon [m]	W	TF/min	Lakt.
1.	170	1182	171	172	1,8
2.	200	1247	201	182	2,7
3.	230	1308	232	189	4,7
4.	260	1362	262	197	7,8

Lakt.	TF/min	W
2.0	174.2	177.7
3.0		
4.0	186.6	221.2
5.0		
6.0	192.4	244.6
7.0		
8.0		



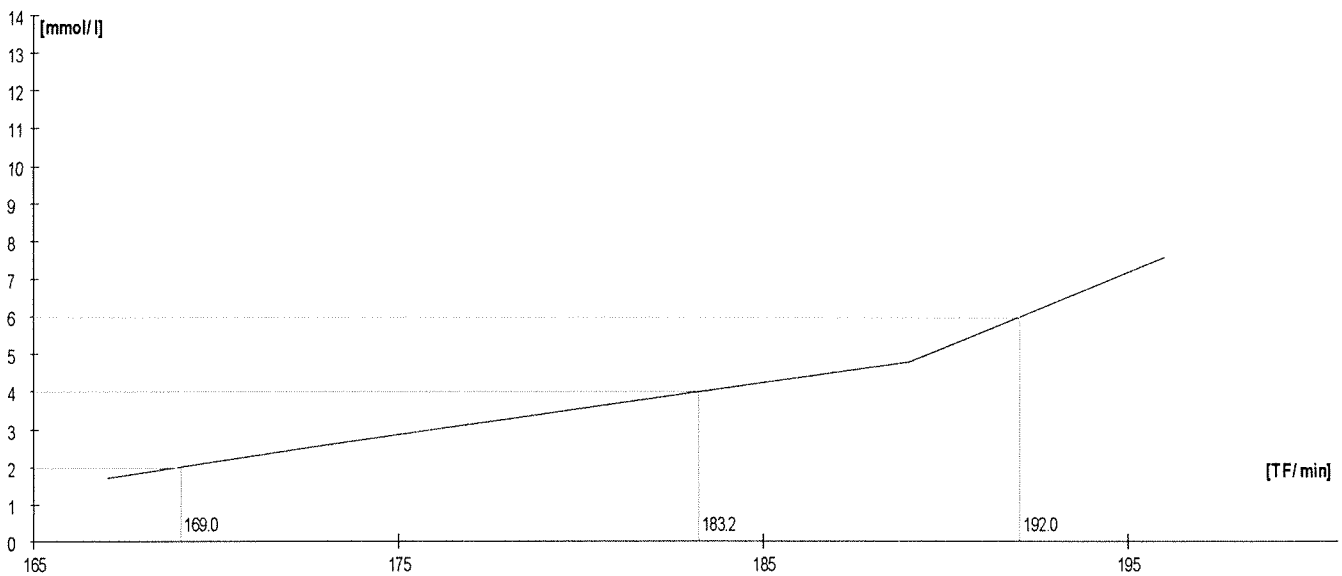
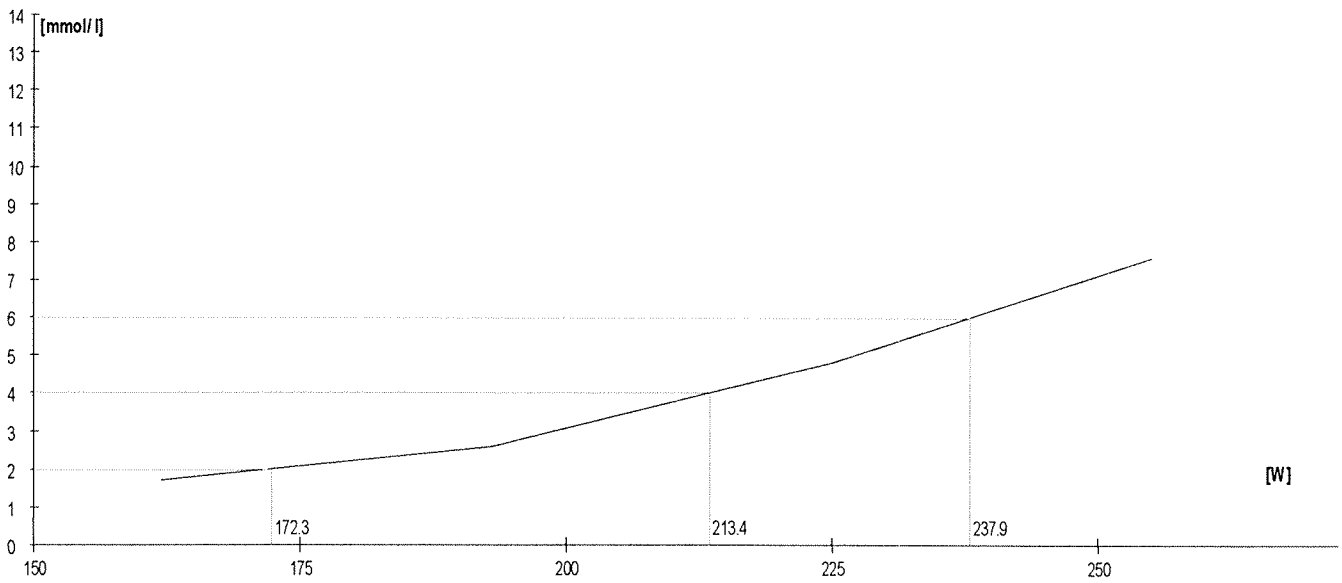
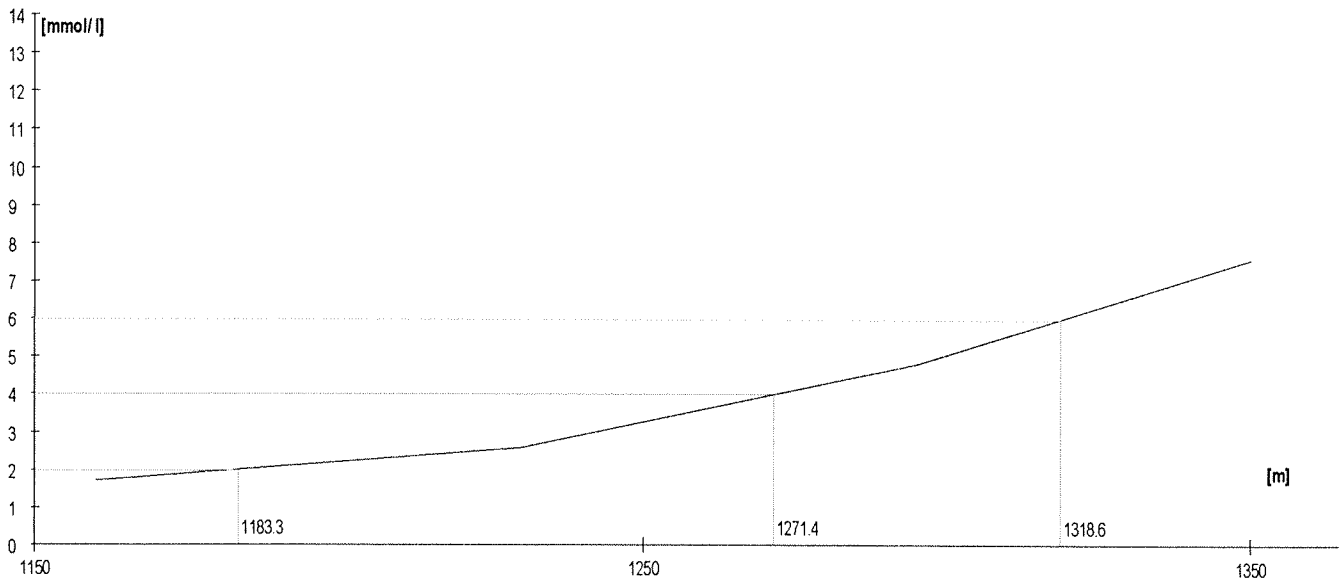
	Rozm. [W]	Výkon [m]	W	TF/min	Lakt.
1.	210	1265	210	168	1,5
2.	240	1322	240	179	2,2
3.	270	1375	270	187	3,7
4.	300	1427	301	195	6,3

Lakt.	TF/min	W
2.0	175.9	231.4
3.0		
4.0	187.9	273.6
5.0		
6.0	194.1	297.4
7.0		
8.0		



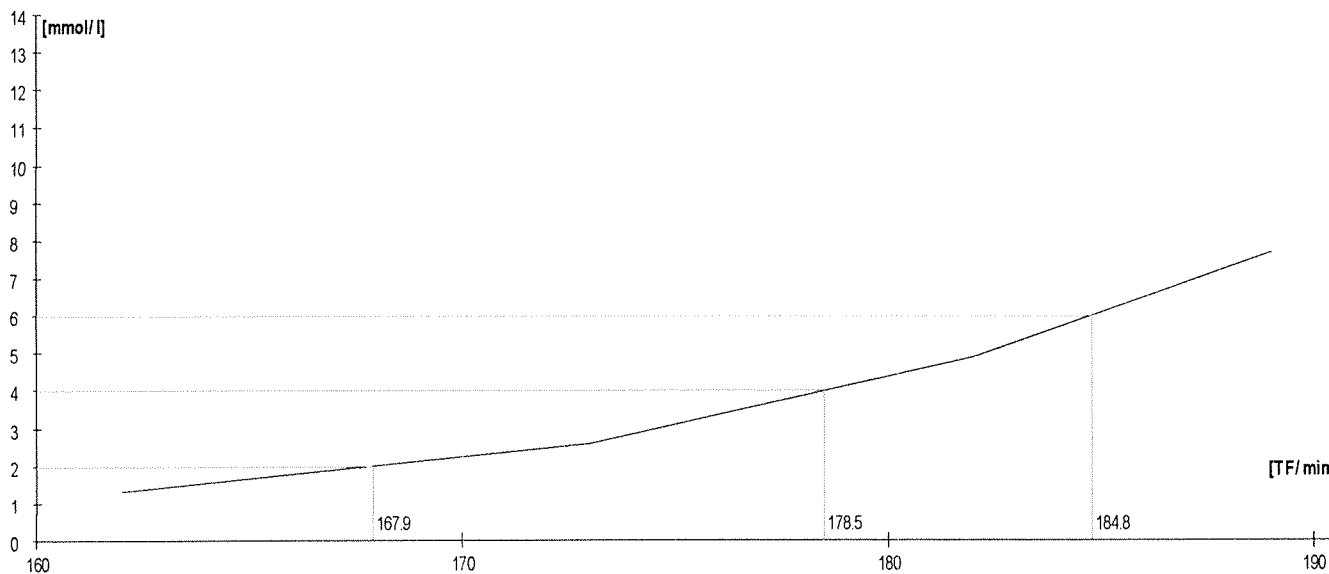
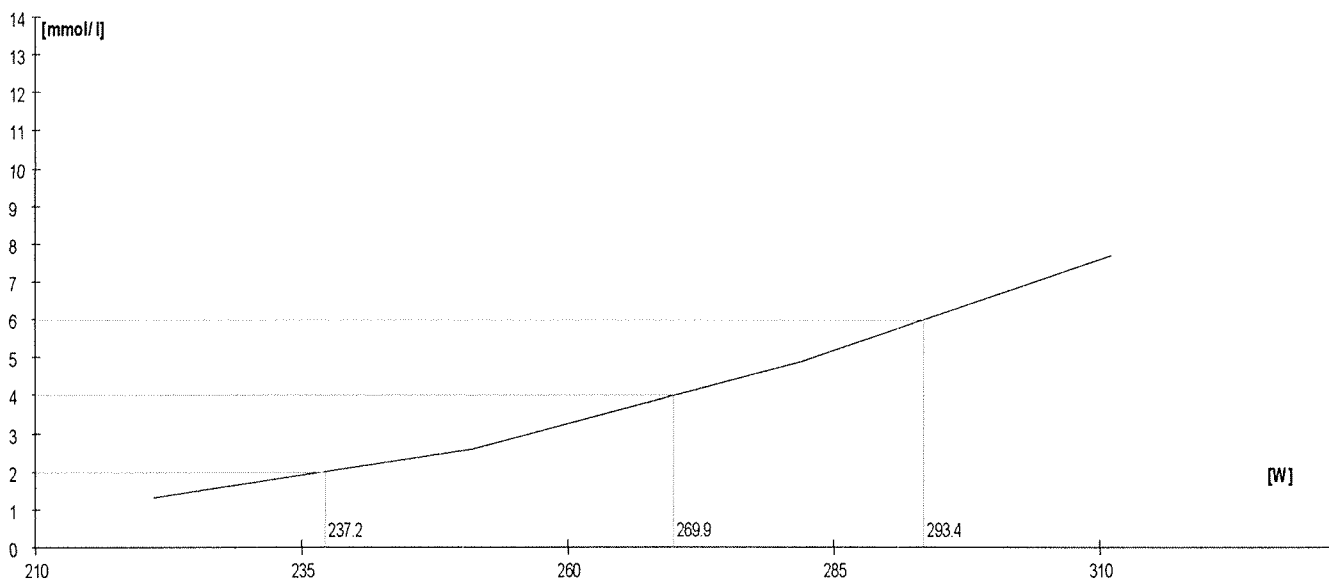
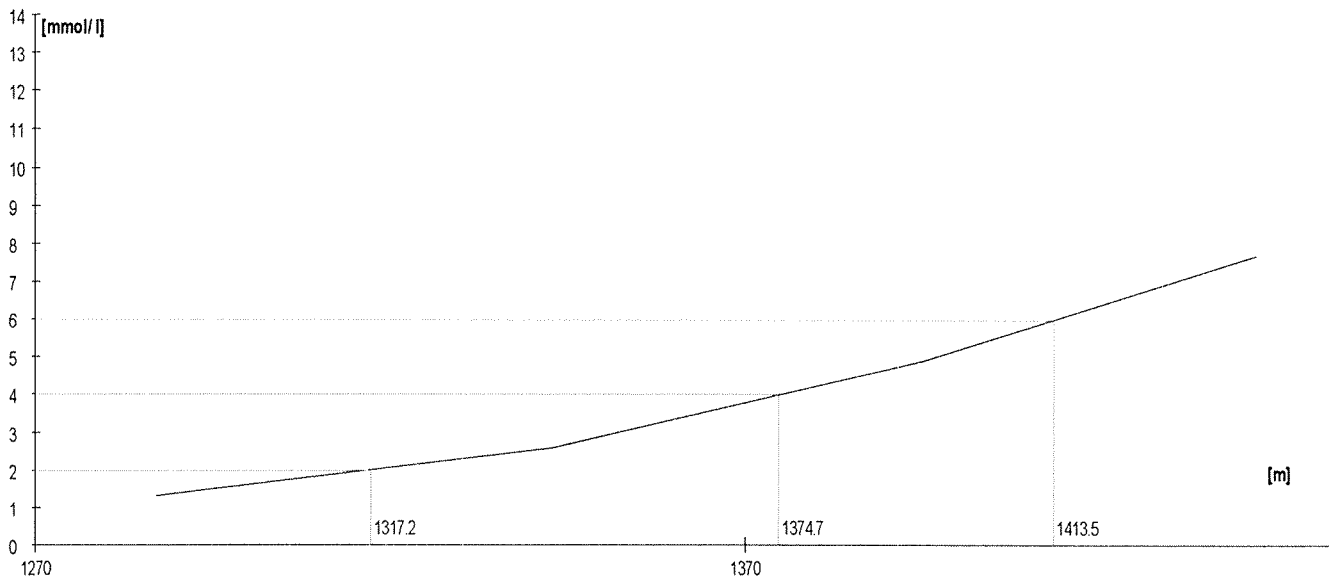
	Rozm. [W]	Výkon [m]	W	TF/min	Lakt.
1.	160	1160	162	167	1,7
2.	190	1230	193	173	2,6
3.	220	1295	225	189	4,8
4.	250	1350	255	196	7,6

Lakt.	TF/min	W
2.0	169.0	172.3
3.0		
4.0	183.2	213.4
5.0		
6.0	192.0	237.9
7.0		
8.0		



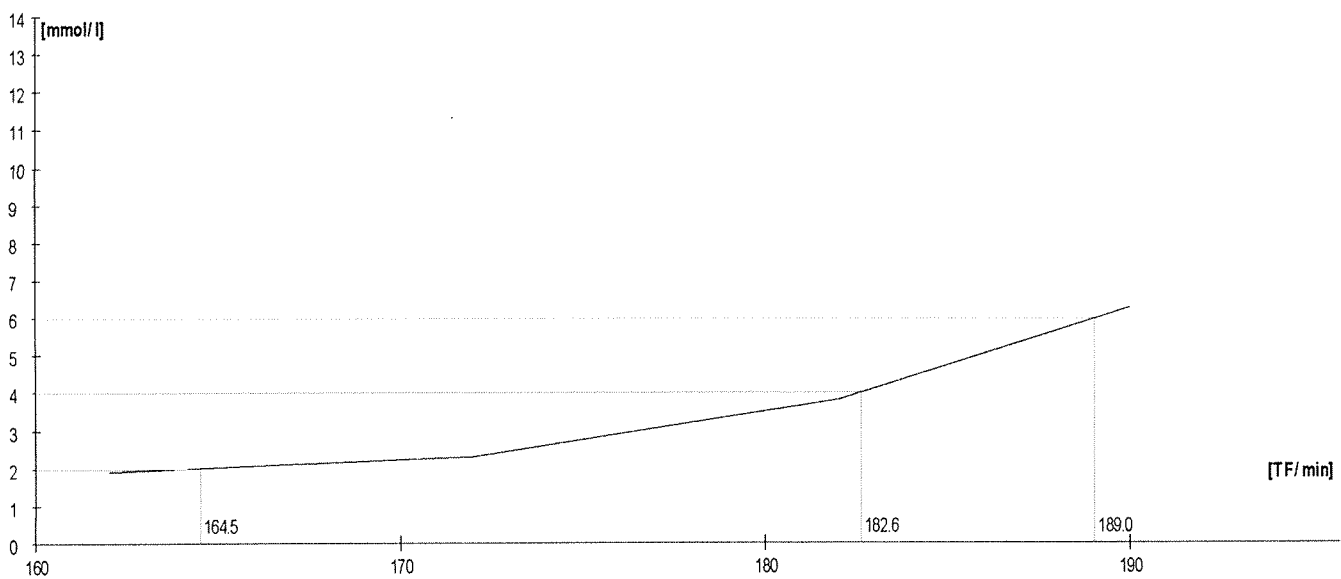
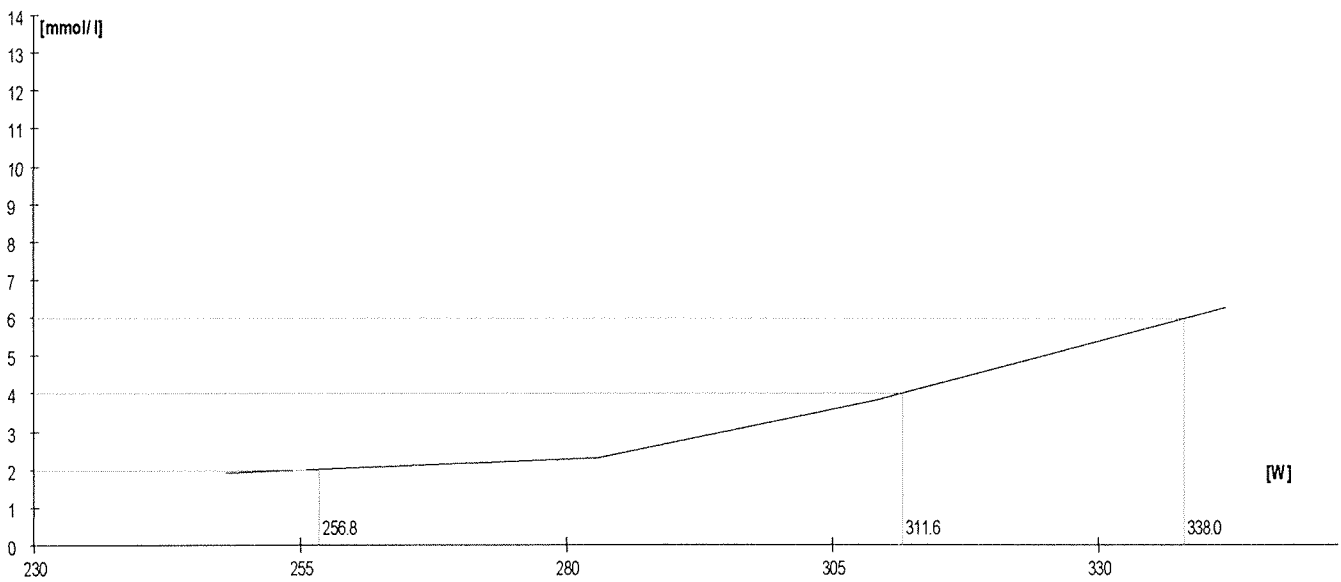
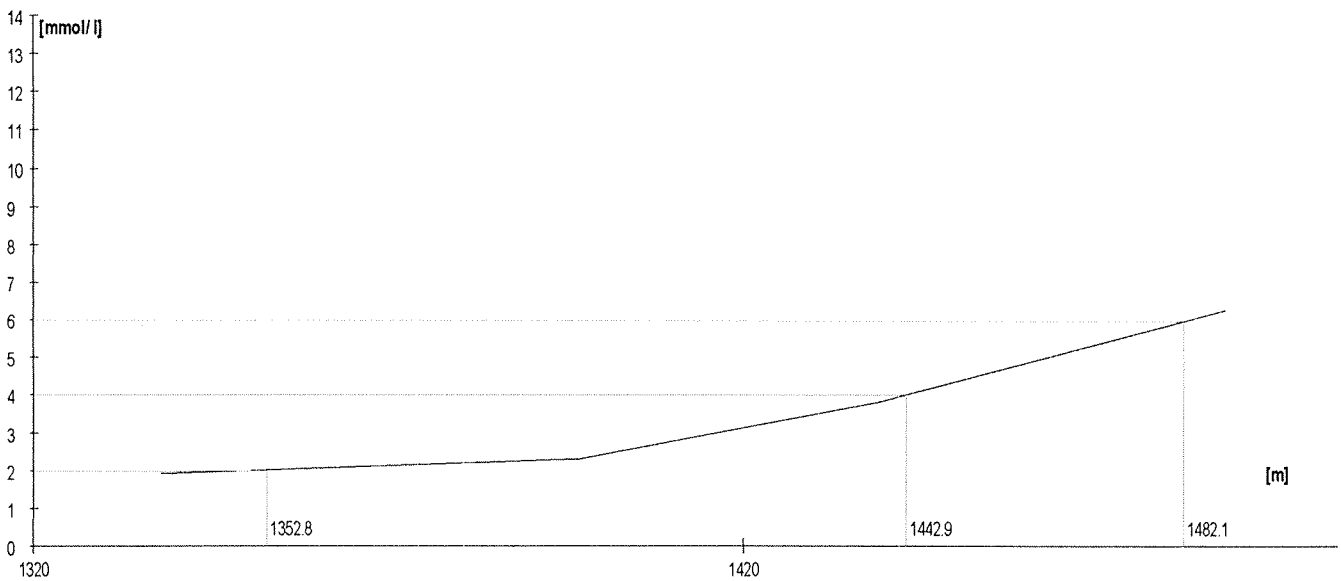
	Rozm. [W]	Výkon [m]	W	TF/min	Lakt.
1.	220	1287	221	162	1,3
2.	250	1343	251	173	2,6
3.	280	1395	282	182	4,9
4.	310	1442	311	189	7,7

Lakt.	TF/min	W
2.0	167.9	237.2
3.0		
4.0	178.6	269.9
5.0		
6.0	184.8	293.4
7.0		
8.0		



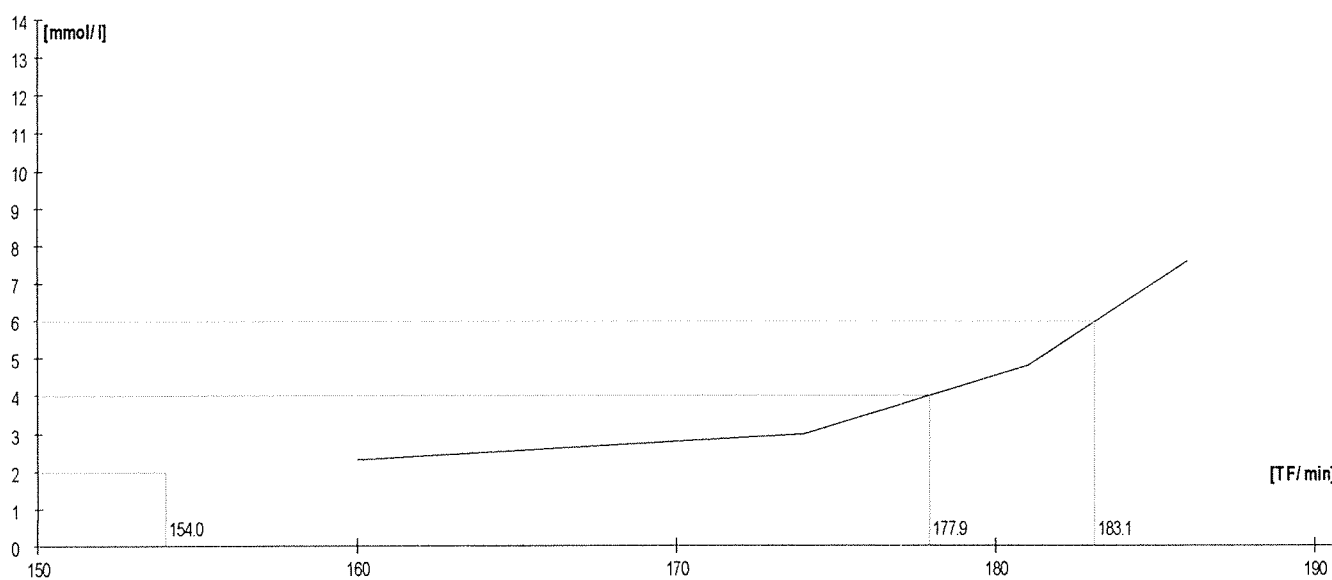
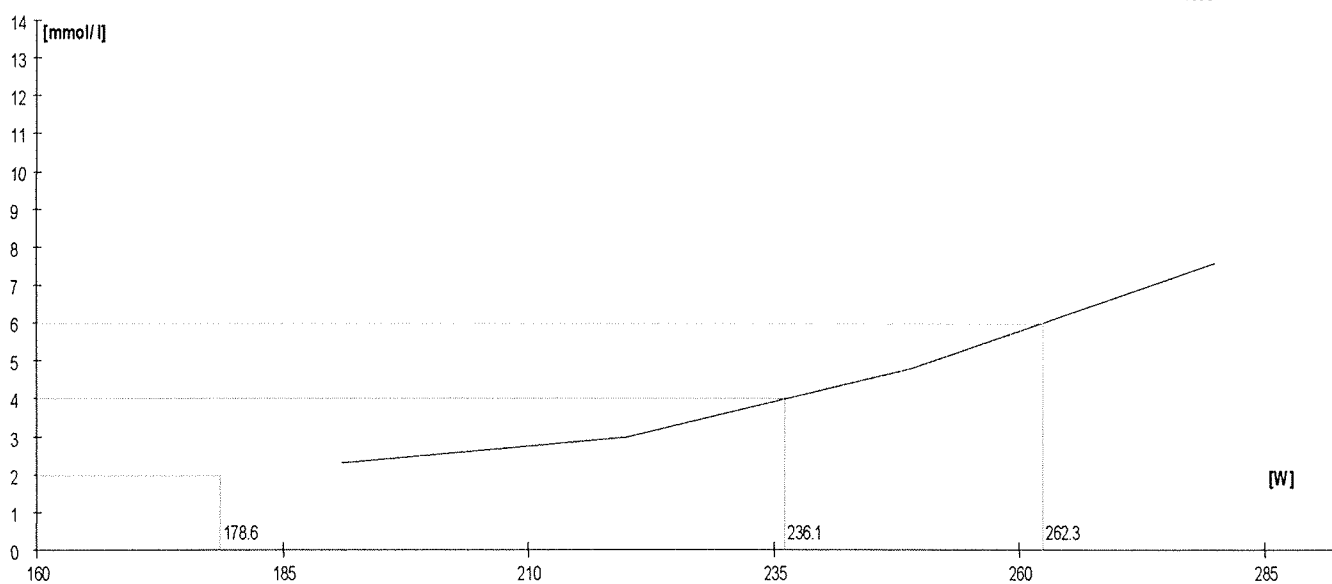
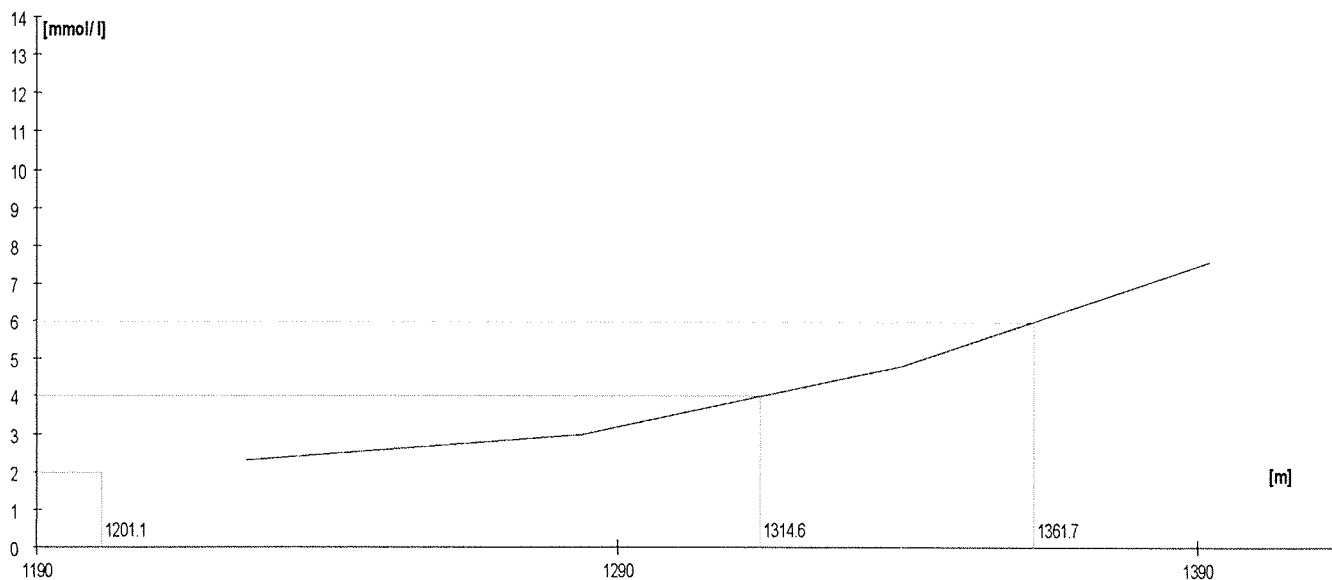
	Rozm. [W]	Výkon [m]	W	TF/min	Lakt.
1.	250	1338	248	162	1,9
2.	280	1397	283	172	2,3
3.	310	1439	309	182	3,8
4.	340	1488	342	190	6,3

Lakt.	TF/min	W
2.0	164.5	256.8
3.0		
4.0	182.6	311.6
5.0		
6.0	189.0	338.0
7.0		
8.0		



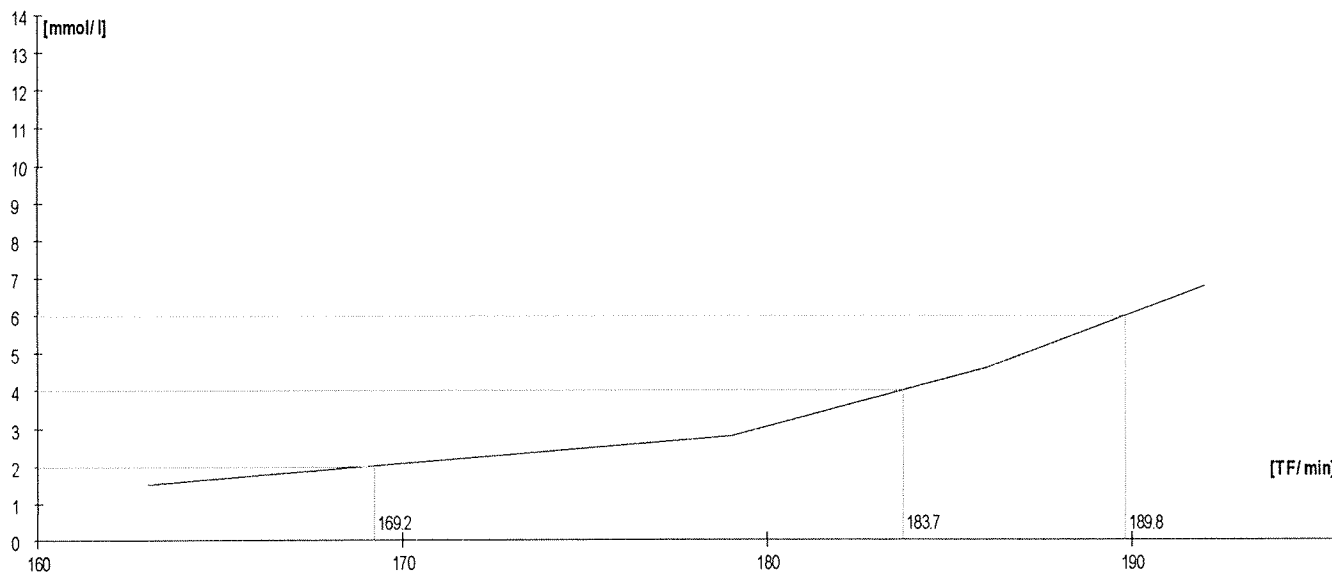
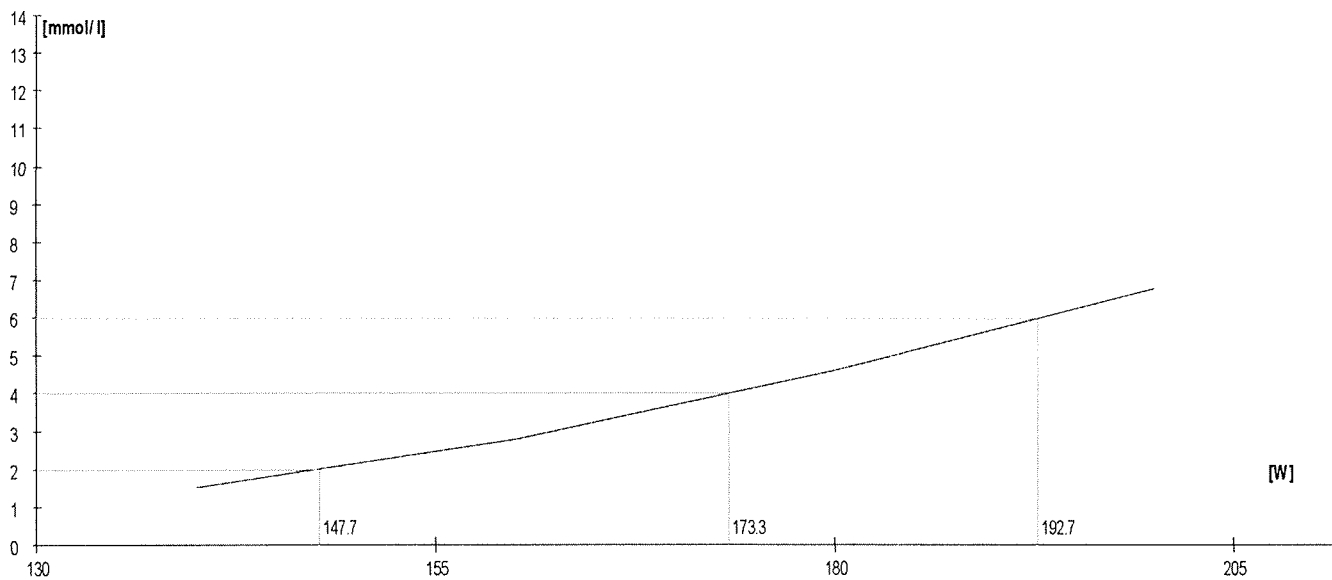
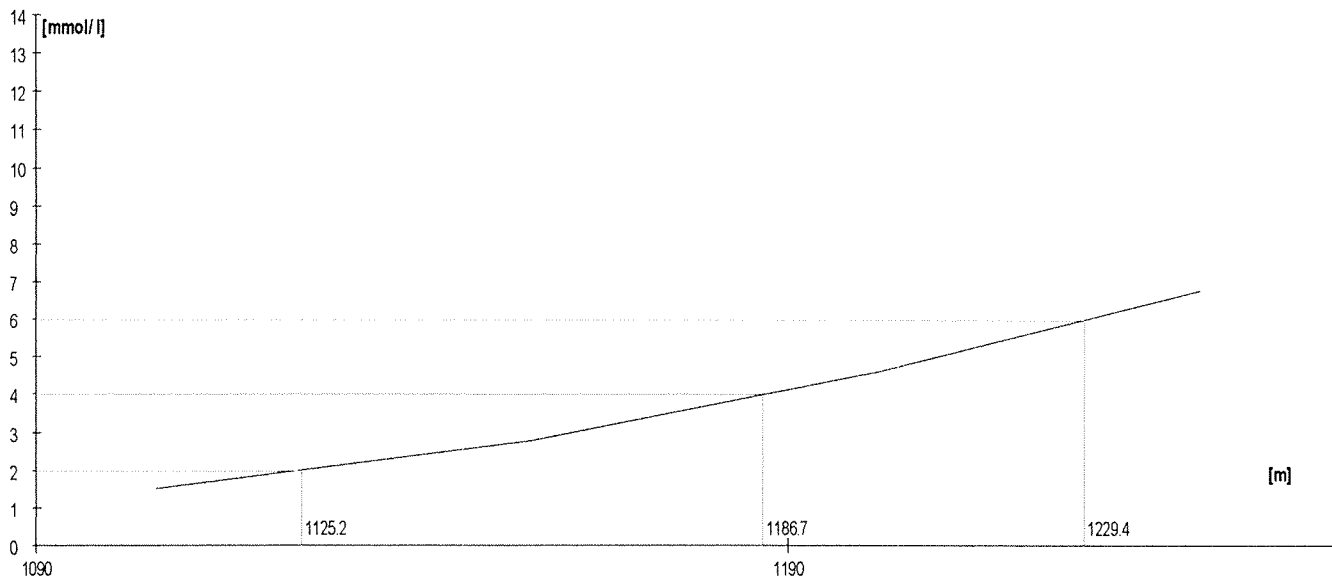
	Rozm. [W]	Výkon [m]	W	TF/min	Lakt.
1.	190	1226	191	160	2,3
2.	220	1284	220	174	3,0
3.	250	1339	249	181	4,8
4.	280	1392	280	186	7,6

Lakt.	TF/min	W
2.0	154.0	178.6
3.0		
4.0	177.9	236.1
5.0		
6.0	183.1	262.3
7.0		
8.0		



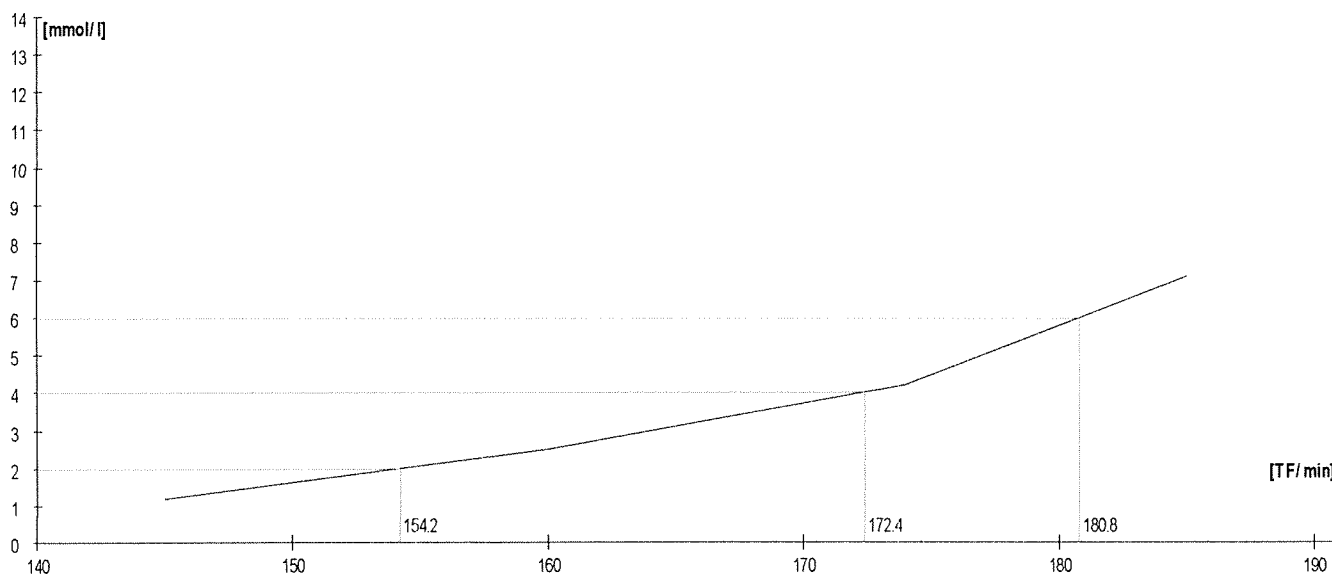
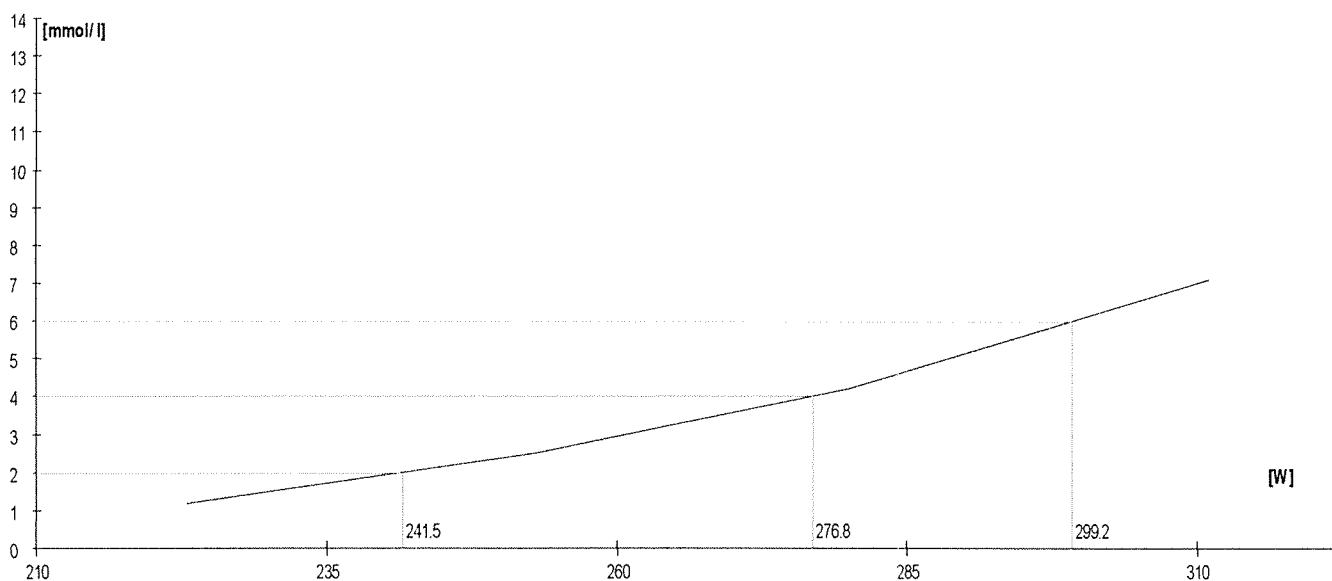
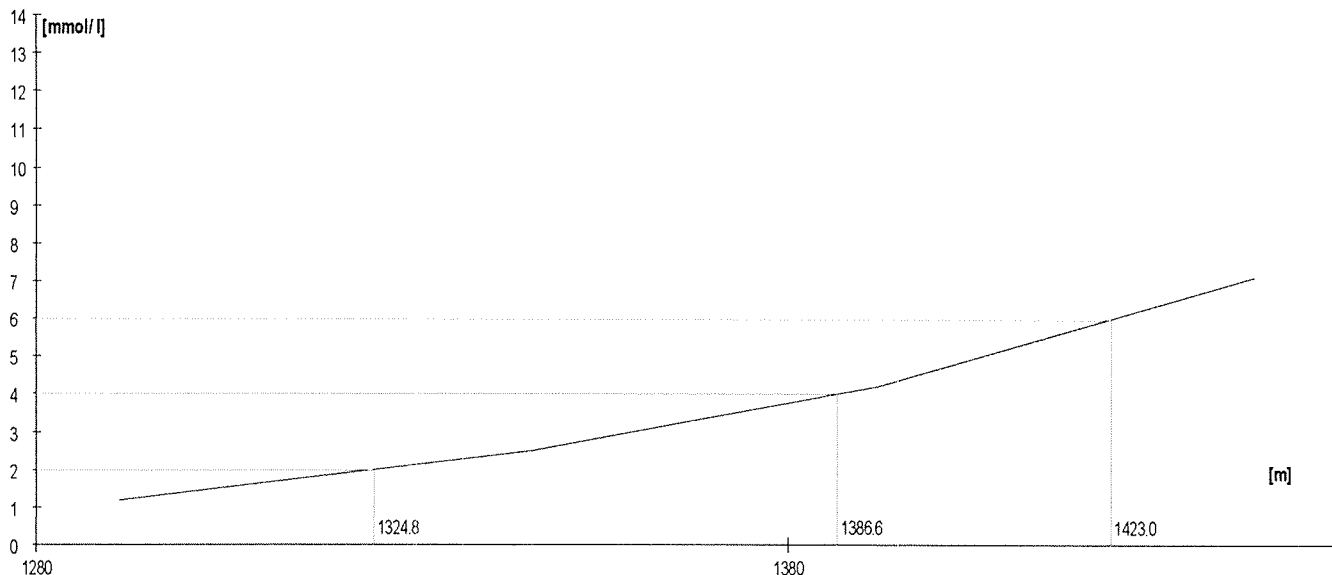
	Rozm. [W]	Výkon [m]	W	TF/min	Lakt.
1.	140	1106	140	163	1,5
2.	160	1156	160	179	2,8
3.	180	1202	180	186	4,6
4.	200	1245	200	192	6,8

Lakt.	TF/min	W
2.0	169.2	147.7
4.0	183.7	173.3
6.0	189.8	192.7
7.0		
8.0		



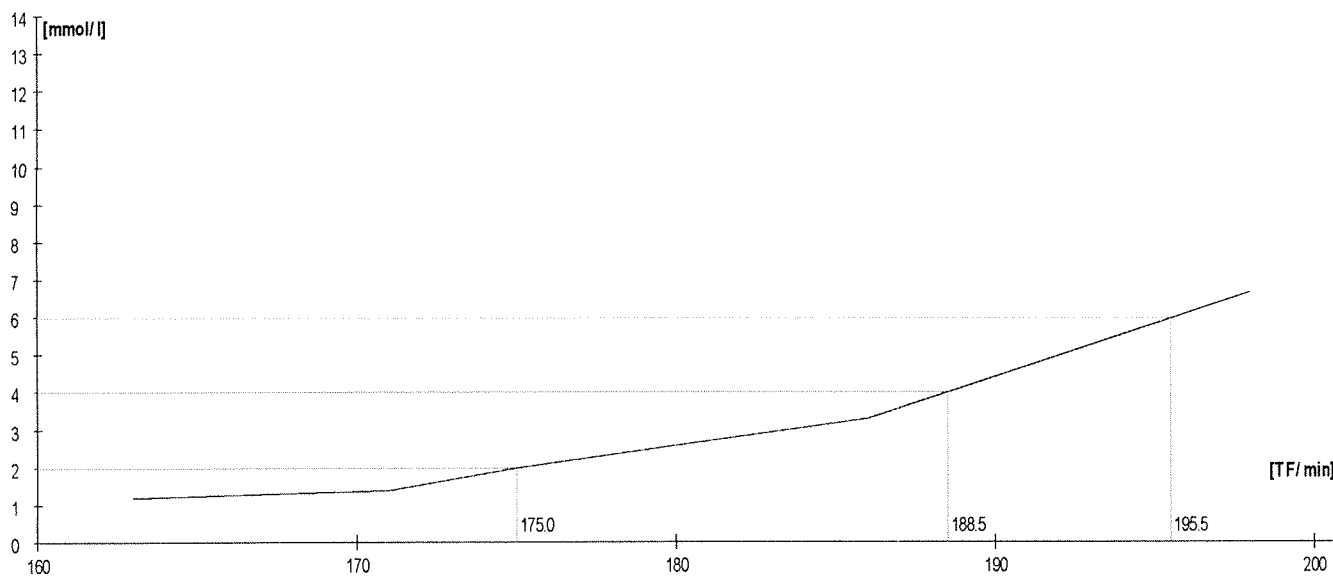
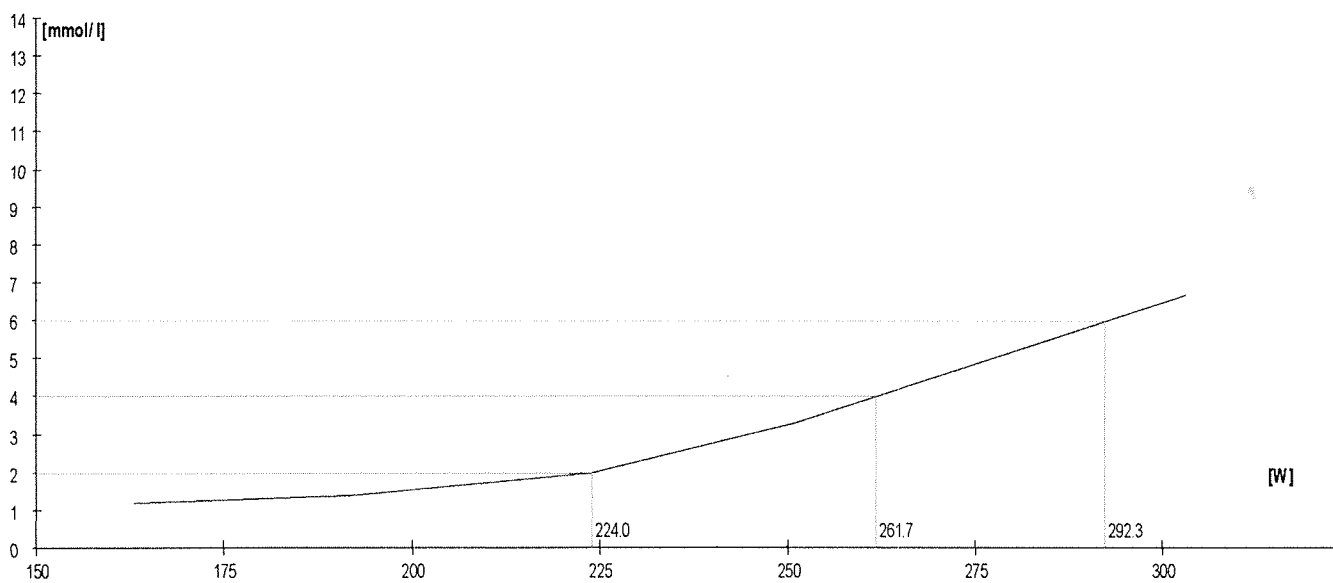
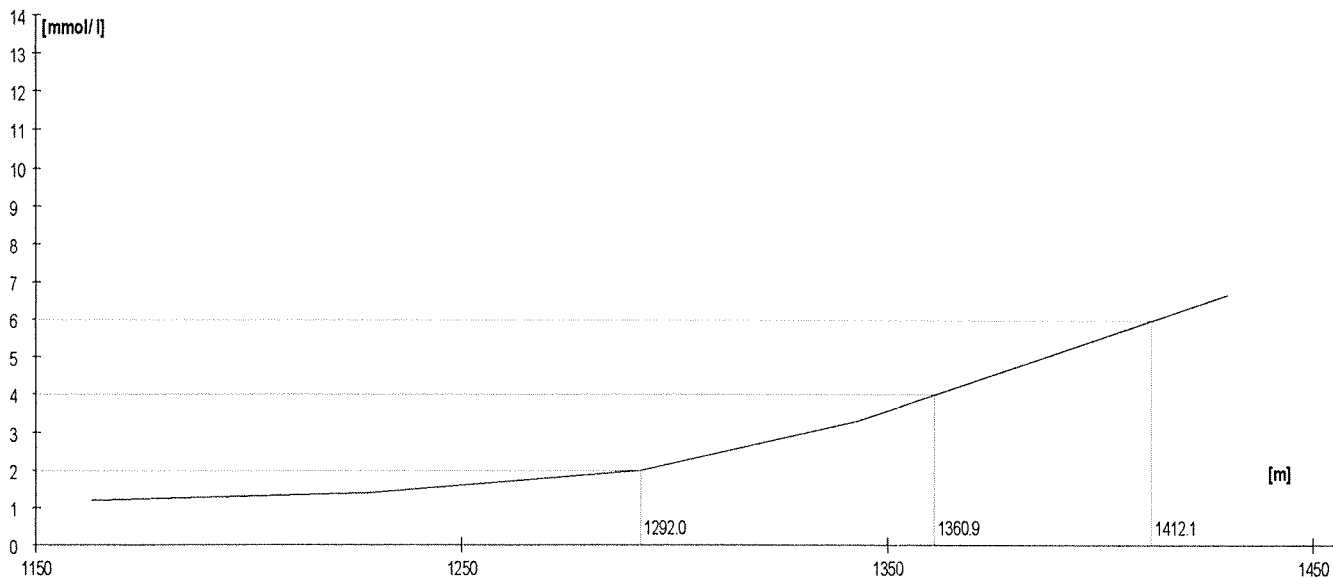
	Rozm. [W]	Výkon [m]	W	TF/min	Lakt.
1.	220	1291	223	145	1,2
2.	250	1346	253	160	2,5
3.	280	1392	280	174	4,2
4.	310	1442	311	185	7,1

Lakt.	TF/min	W
2.0	154.2	241.5
3.0		
4.0	172.4	276.8
5.0		
6.0	180.8	299.2
7.0		
8.0		



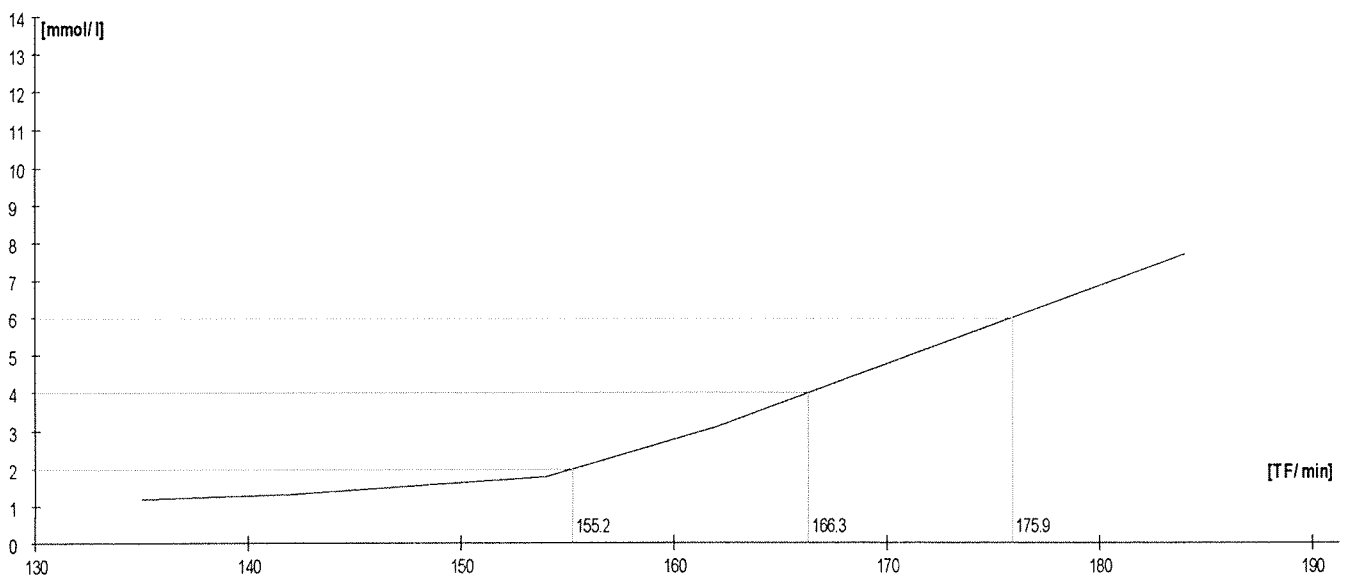
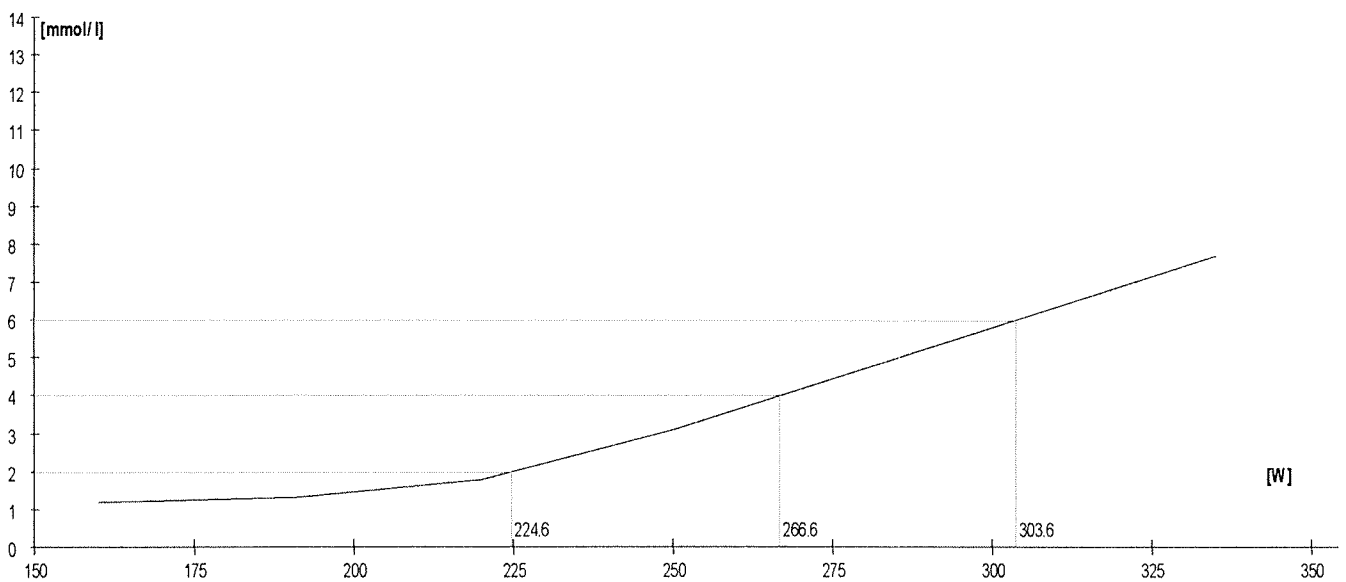
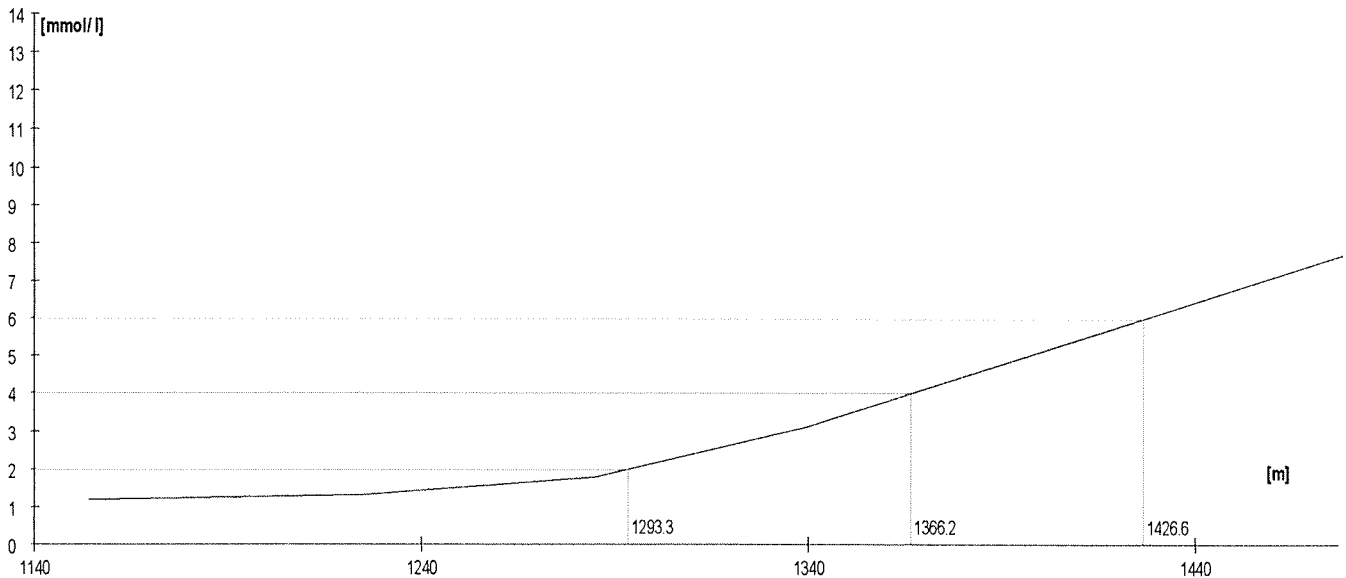
	Rozm.[W]	Výkon [m]	W	TF/min	Lakt.
1.	160	1163	163	163	1,2
2.	190	1228	192	171	1,4
3.	220	1292	224	175	2,0
4.	250	1343	251	186	3,3
5.	280	1430	303	198	6,7

Lakt.	TF/min	W
2.0	175.0	224.0
3.0		
4.0	188.5	261.7
6.0	195.5	292.3
7.0		
8.0		



	Rozm. [W]	Výkon [m]	W	TF/min	Lakt.
1.	160	1154	160	135	1,2
2.	190	1225	191	142	1,3
3.	220	1285	220	154	1,8
4.	250	1339	250	162	3,1
5.	280	1478	335	184	7,7

Lakt.	TF/min	W
2.0	155.2	224.6
3.0		
4.0	166.3	266.6
5.0		
6.0	175.9	303.6
7.0		
8.0		



	Rozm. [W]	Výkon [m]	W	TF/min	Lakt.
1.	160	1158	161	143	1,0
2.	190	1228	192	155	1,3
3.	220	1289	222	164	2,8
4.	250	1343	251	179	4,7
5.	280	1446	314	191	9,9

Lakt.	TF/min	W
2.0	159.2	206.0
3.0		
4.0	173.5	240.3
5.0		
6.0	182.0	266.8
7.0		
8.0		

